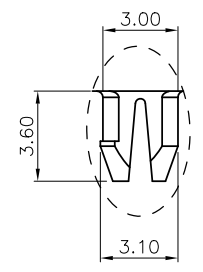
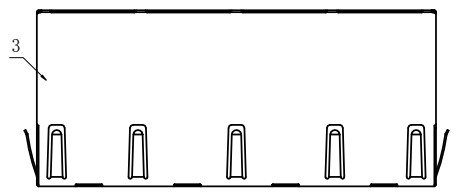
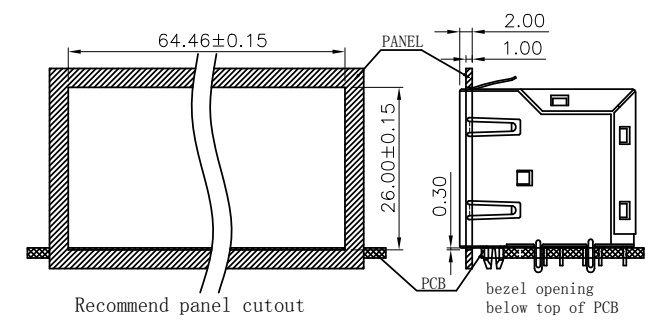
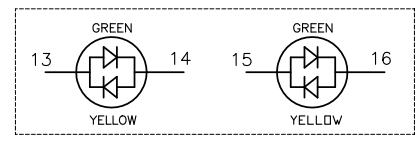
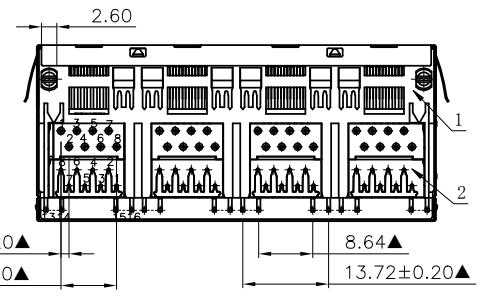
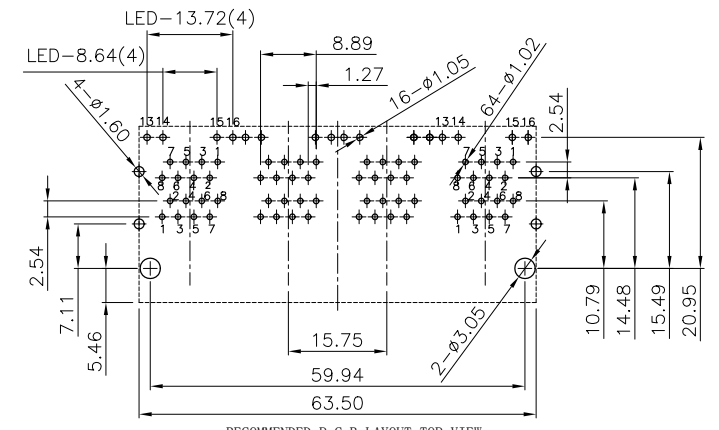
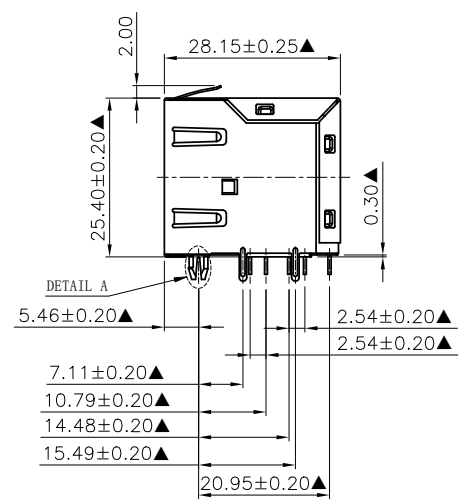
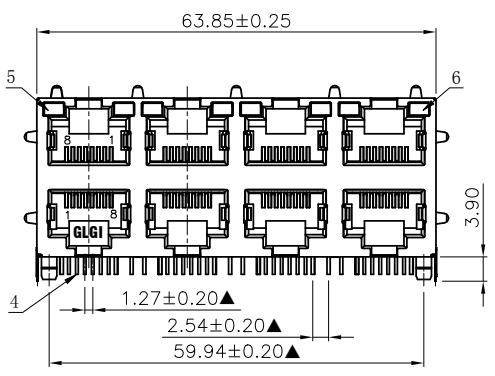


8 7 6 5 4 3 2 1



45031-26 G X X 1
规格流水码
电镀代码
05-1u"
06-1.2u"
08-1.5u"
09-2u"
11-3u"
13-5u"
15-6u"
19-15u"
31-1.8u"

NO.	ECN NO.	DESCRIPTION	REV.	DRAW	DATE



NOTES:
1. Housing: Glass Filled PA46 BLACK UL94V-0 (RoHS).
2. Insert: GLASS FILLED PBT BLACK UL94V-0 (RoHS).
3. Contact: 0.46mm DIA Phosphor Bronze Plating Over Nickel (RoHS).
4. Shielding: Copper Alloy with Nickel Plated (RoHS).
5. Led1: Green/Yellow (RoHS).
6. Led2: Green/Yellow (RoHS).
7. Durability: 750 Cycles Min;
8. Connector Mating, Unmating Force: 30N Max.
9. Plug Retention Force: 50N min, 60s±5s.
※MATES WITH MODULAR PLUG CONFORMING TO FCC PART 68, SUBPART F.
※The Dimensions Marked "▲" Symbols Are Stand For Key Characteristics.

electrical specification:
1. Voltage Rating: 125 VAC RMS.
2. Current Rating: 1.5A Max @25° C;
3. Contact Resistance: 20 mΩ Max;
4. Insulation Resistance: 500 MΩ Min. @500 VDC;
5. Dielectric withstanding Voltage:
1000 V DC or AC peak, for 1 minute 0.5 mA contact-to-contact.
1500 V DC or AC peak, for 1 minute 0.5 mA contact to screen and test panel.
environmental characteristics:
1. Stockpile Temperature: -40° C to 70° C;
2. Operating Temperature: -40° C to 70° C;

产品客户图 Customer Drw		GLGNET® 深圳市方向电子股份有限公司 SHEN ZHEN GLGNET ELECTRONICS CO., LTD.			
未注公差 TOLERANCE UNLESS OTHERWISE SPECIFIED	.X	±0.35	设计 DESIGN	品名 TITLE	5931-S-K9-2x4-L-a-8C-26(GY/GY)
	.XX	±0.25			
	.XXX	±0.15			
	X°	±2°			
比例 SCALE	1:1	角法 PROJ.	设计 DESIGN	品名 TITLE	5931-S-K9-2x4-L-a-8C-26(GY/GY)
张数 SHEET	1/1	大小 SIZE	A4	校对 CHECKED	料号 ITEM NO.
单位 UNIT	mm	版本 REV.	P0	核准 APPROVED	图号 DWG NO.
					45031-26GXX1
					GLG-110667

8 7 6 5 4 3 2 1