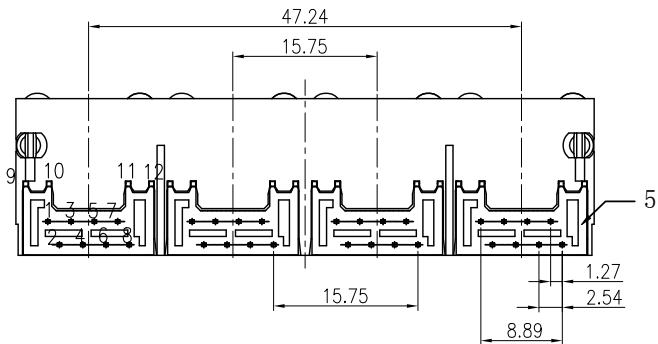
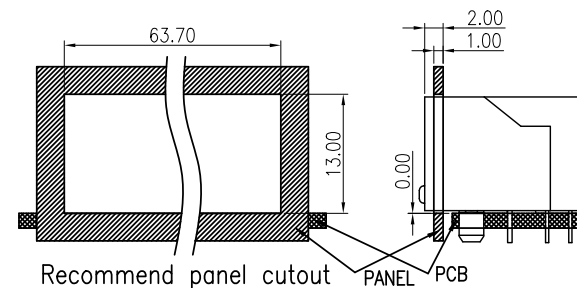
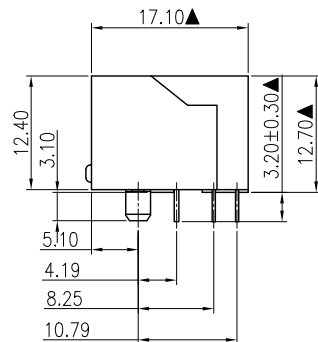
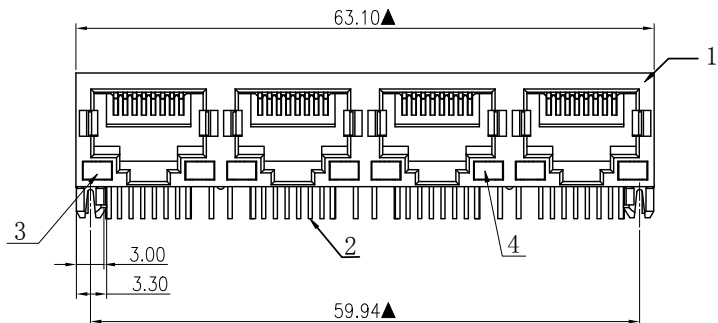
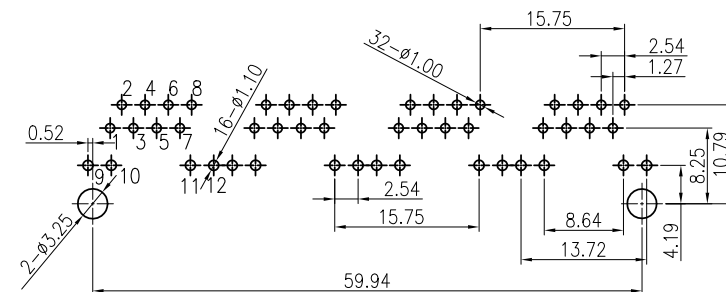


NO.	ECN NO.	DESCRIPTION	REV.	DRAW	DATE
1					
2					
3					



42100-16 X X X 1
规格流水码
S: 半金亮锡
M: 半金雾锡
电镀代码
05-G/F
11-3u"
15-6u"
19-15u"



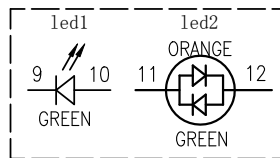
MATERIALS:

1. Housing: Glass Filled PA46 BLACK UL94V-0 (RoHS).
2. Contact: 0.35*0.44mm DIA Phosphor Bronze gold Plating Over Nickel (RoHS).
3. Led1: GREEN (RoHS)
4. Led2: ORANGE/GREEN (RoHS)
5. Insert: Glass Filled PBT UL94V-0

※RECOMMENDED P. C. B THICKNESS: 1.60mm

※MATES WITH MODULAR PLUG CONFORMING TO FCC PART 68, SUBPART F.

※The Dimensions Marked "▲" Symbols Are Stand For Key Characteristics.



LED PIN DEFINE

产品客户图 Customer Drw		设计 DESIGN		品名 TITLE	
未注公差 TOLERANCE	.X ±0.35	角法 PROJ.	设计	品名	5931-Q-1x4-L-8C-1B-16 (G/OG)
UNLESS OTHERWISE SPECIFIED	.XX ±0.25	大小 SIZE	校对 CHECKED	料号 ITEM NO.	42100-16XXX1
	.XXX ±0.15	版本 REV.	核准 APPROVED	图号 DWG NO.	GLG-WL-163
	X° ±2°	单位 UNIT			

GLGNET® 深圳市方向电子股份有限公司
Shenzhen GLGNET Electronics Co.,LTD.