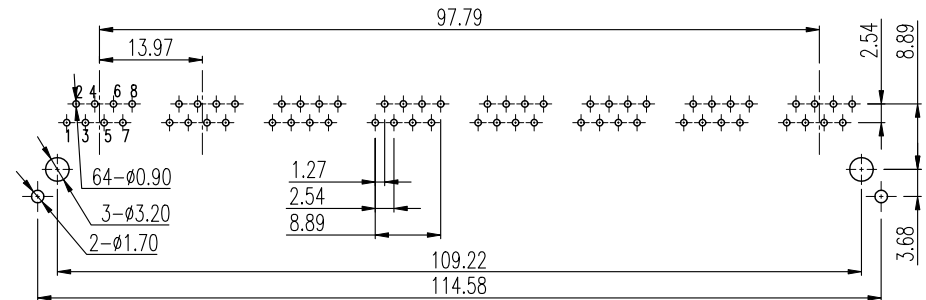
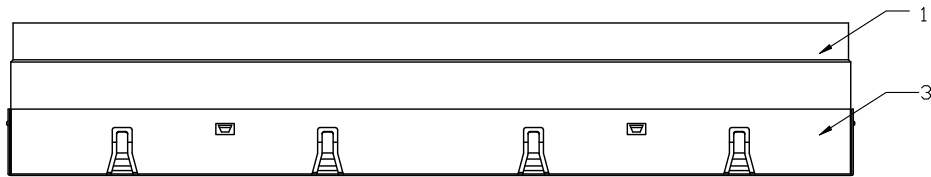
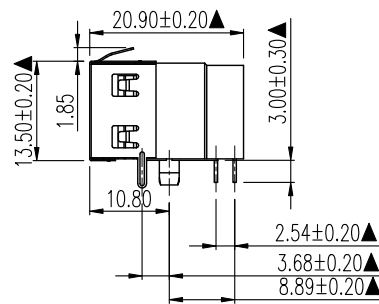
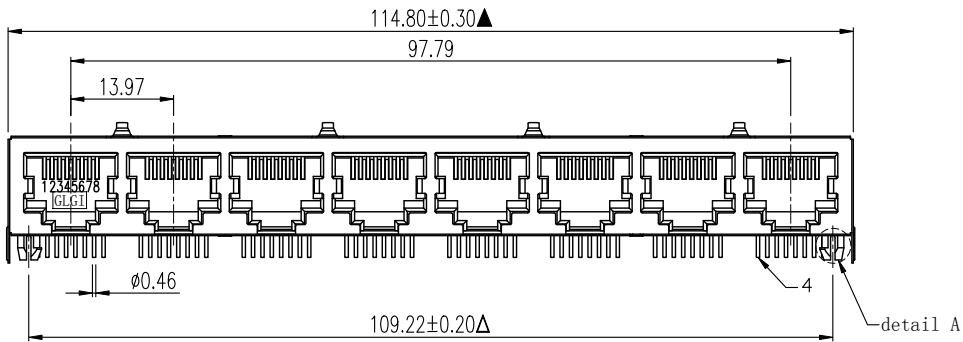


NO.	ECN NO.	DESCRIPTION	REV.	DRAW	DATE



RECOMMENDED P. C. B LAYOUT TOP VIEW  
(COMPONENT SIDE DIM ±0.05)

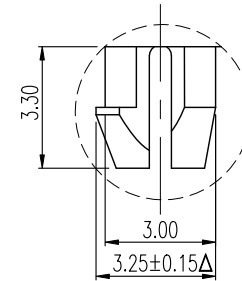


41105-0 1 G X X 1

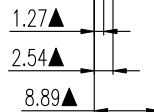
规格流水码

电镀代码

05-G/F  
11-3u"  
15-6u"  
19-15u"



DETAIL A 5:1



**MATERIALS:**

1. Housing: Glass Filled UL94V-0. (ROHS)
  2. Insert: Glass Filled PBT UL94V-0 (ROHS)
  3. Shielding: Copper Alloy with Nickel Plated. (ROHS)
  4. Contact: 0.46mm DIA Phosphor Bronze gold Plating Over Nickel. (ROHS)
- ※MATES WITH MODULAR PLUG CONFORMING TO FCC PART 68, SUBPART F.

产品客户图 Customer Drw		未注公差 TOLERANCE UNLESS OTHERWISE SPECIFIED		.X ±0.30 .XX ±0.20 .XXX ±0.10 X° ±2°		比例 SCALE 1:1		角法 PROJ.		设计 DESIGN		品名 TITLE	
张数 SHEET	1/1	大小 SIZE	A4	校对 CHECKED		料号 ITEM NO.	41105-01GXX1		核准 APPROVED		图号 DWG NO.	GLG-W0-029	
单位 UNIT	mm	版本 REV.	A0										

**GLGNET** 深圳市方向电子股份有限公司  
SHEN ZHEN GLGNET ELECTRONICS CO., LTD.