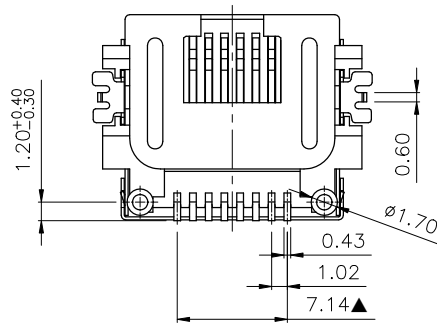
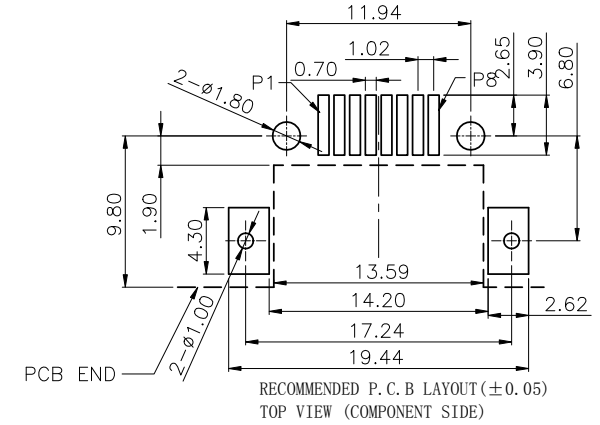
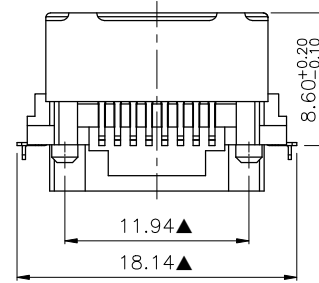
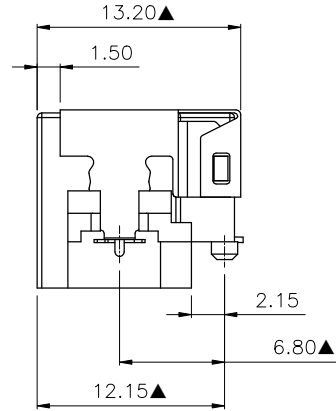
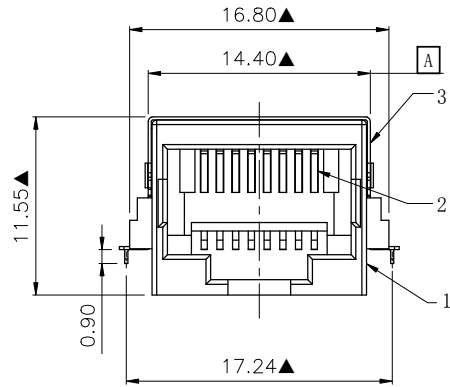
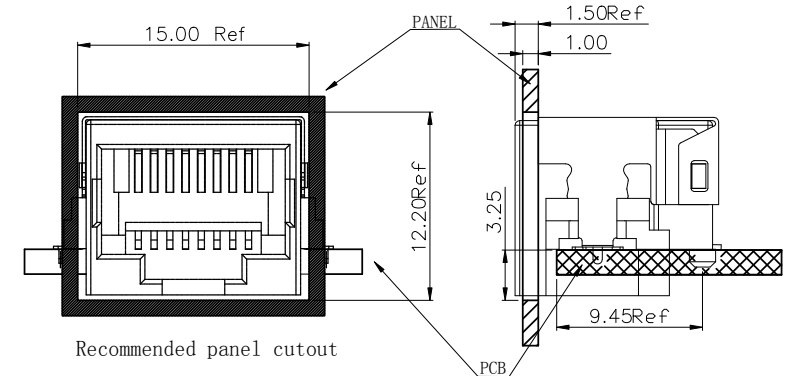


NO.	ECN NO.	DESCRIPTION	REV.	DRAW	DATE
1.					
2.					
3.					



- 41000-00XXX1
- J05: Ni50-100u", G/F
  - J11: Ni50-100u", Au3u"
  - J15: Ni50-100u", Au6u"
  - J19: Ni50-100u", Au15u"
  - J23: Ni50-100u", Au30u"



**Mechanical Characteristic:**

1. Housing: Glass Filled LCP Black UL94V-0 (RoHS).
  2. Contact: 0.35mm Thickness Phosphor Bronze gold Plating Over Nickel (RoHS).
  3. Shielding: 0.20mm Thickness Copper Alloy with Nickel Plated (RoHS).
  4. Durability: 750 Cycles Min;
  5. Connector Mating/Unmating Force: 30N Max.
  6. Plug Retention Force: 50N min, 60s±5s;
- ※MATES WITH MODULAR PLUG CONFORMING TO FCC PART 68, SUBPART F.  
※The Dimensions Marked "▲" Symbols Are Stand For Key Characteristics.

**Electrical Characteristic:**

1. Voltage Rating: 150 VAC RMS;
2. Current Rating: 1.5 A Max @25° C;
3. Insulation Resistance: 500 MΩ Min. @500 VDC;

产品客户图 Customer Drw		TOLERANCE		设计 DESIGN		品名 TITLE	
未注公差	.X	±0.35	UNLESS OTHERWISE SPECIFIED	角法 PROJ.	设计 CHECKED	图号 ITEM NO.	5J01-T-SMT-8C
	.XX	±0.25					
	.XXX	±0.15					
比例 SCALE	1:1	X°	±2°	版本 REV.	核准 APPROVE	图号 DWG NO.	GLG-W0-125 GLG-110786

**GLGNET**® 深圳市方向电子股份有限公司  
Shenzhen GLGNET Electronics Co.,LTD.