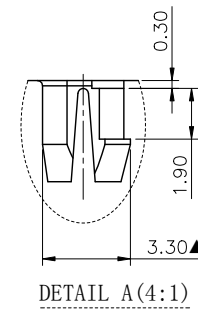
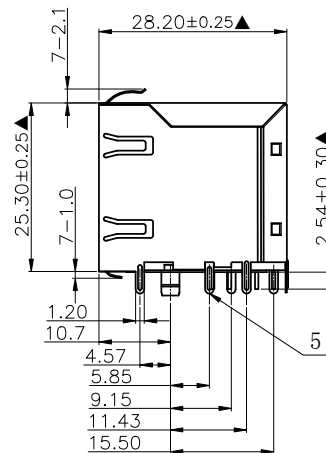
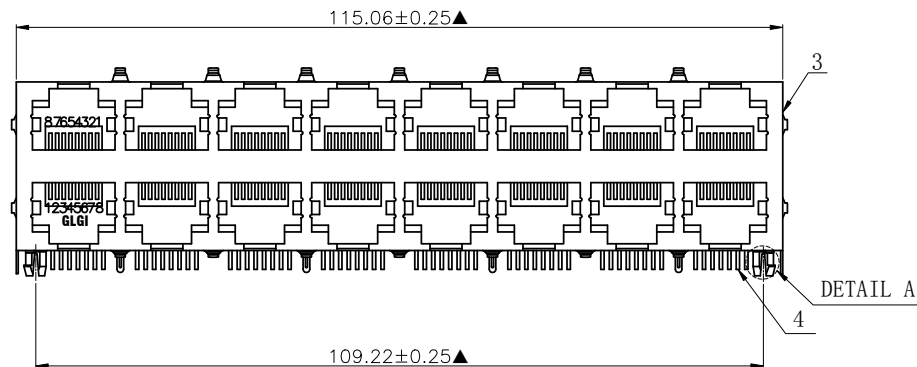


NO.	ECN NO.	DESCRIPTION	REV.	DRAW	DATE
1					
2					
3					



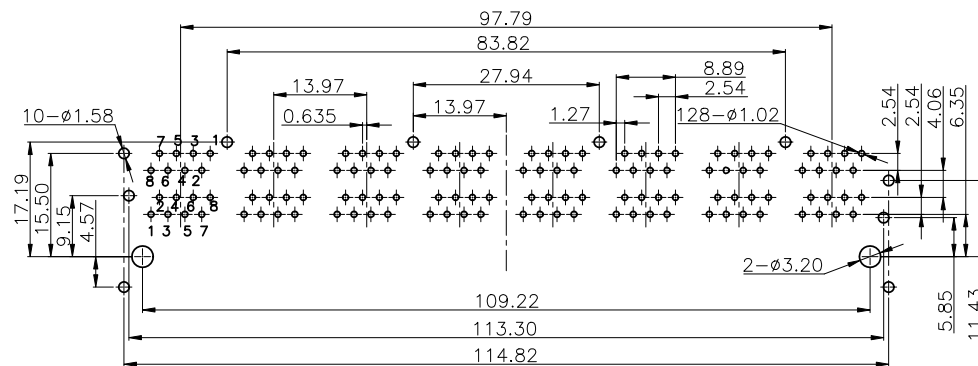
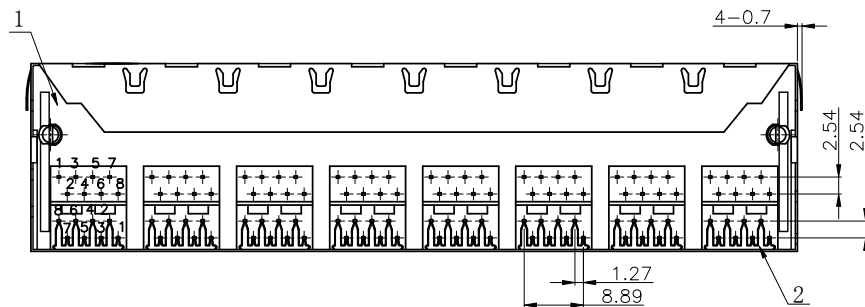
43065-10 X X X 1

规格流水码
电镀规格
S 半金亮锡
M 半金雾锡

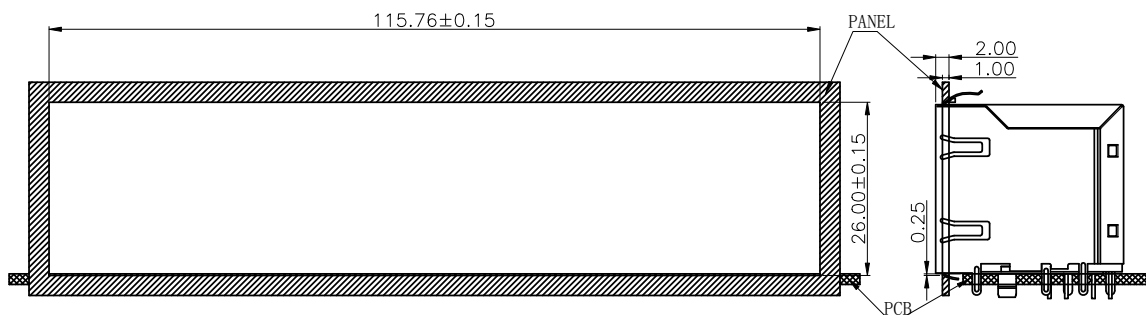
电镀代码
05-G/F
09-2u"
11-3u"
15-6u"
19-15u"
23-30u"

MATERIALS:

- Housing: PA46 BLACK UL94V-0 (RoHS).
 - Insert: PBT UL94V-0 (RoHS).
 - Shielding: 0.20mm Copper Alloy with Nickel Plated (RoHS).
 - Contact: 0.35x0.44mm Phosphor Bronze gold Plating Over Nickel (RoHS).
 - Welding post: 0.20mm Copper Alloy with Nickel Plated (RoHS).
- ※MATES WITH MODULAR PLUG CONFORMING TO FCC PART 68, SUBPART F.
※凡标注▲记号者, 为重点尺寸.



RECOMMENDED P.C.B LAYOUT TOP VIEW
(COMPONENT SIDE TOLERANCE ±0.05)



Recommended panel cutout

bezel opening below top of pcb

产品客户图 Customer Drw		GLGNET® 深圳市方向电子股份有限公司 Shenzhen GLGNET Electronics Co.,LTD.				
未注公差 TOLERANCE UNLESS OTHERWISE SPECIFIED	.X .XX .XXX X°	±0.35 ±0.25 ±0.15 ±2°	设计 DESIGN		品名 TITLE	5921-Q-S-K18-A-2x8-8C-IV-10
比例 SCALE	1:1	角法 PROJ.	设计 DESIGN		料号 ITEM NO.	43065-10XXX1
张数 SHEET	1/1	大小 SIZE	校对 CHECKED		图号 DWG NO.	GLG-W0-245
单位 UNIT	mm	版本 REV.	核准 APPROVED			