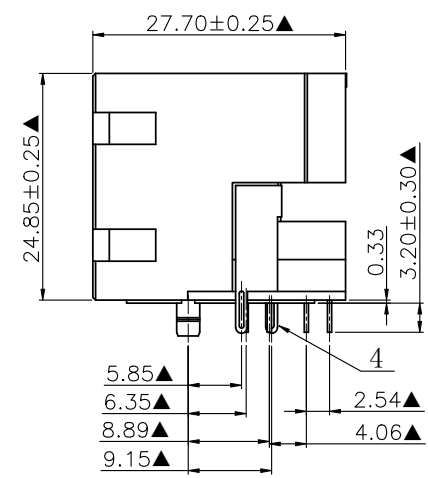
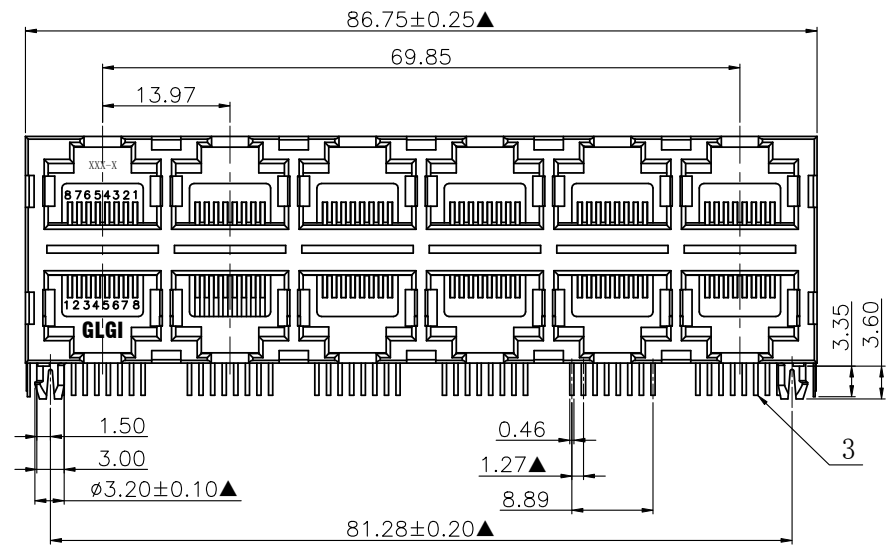
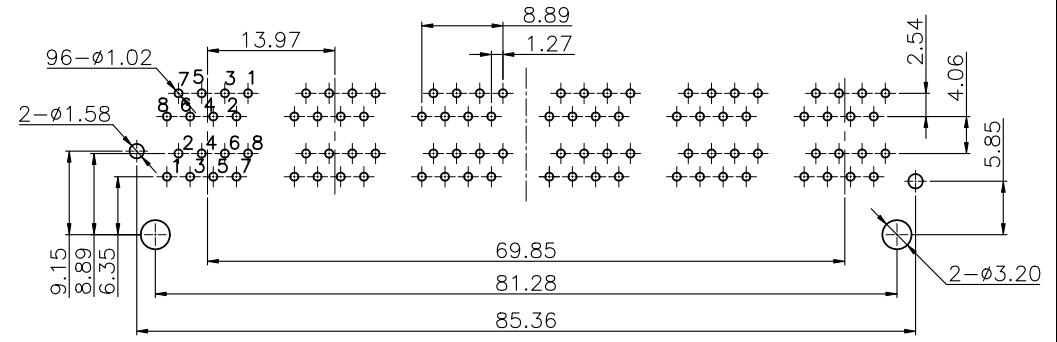
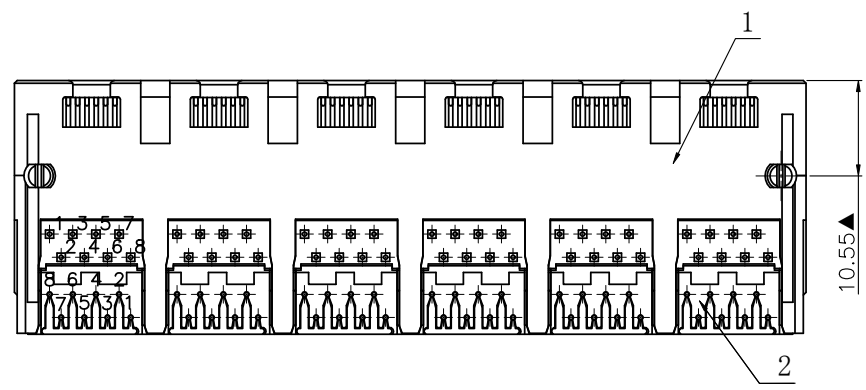


NO.	ECN NO.	DESCRIPTION	REV.	DRAW	DATE
1.					
2.					
3.					



43040-00 G X X 1  
 规格流水码  
 电镀代码  
 -05-G/F  
 -11-3u"  
 -13-5u"  
 -19-15u"  
 -23-30u"



RECOMMENDED P. C. B LAYOUT TOP VIEW  
 (COMPONENT SIDE TOLERANCE ±0.05)

**MATERIALS:**

- 1.Housing:Glass Filled PA46 BLACK UL94V-0(ROHS).
  - 2.Insert:Glass Filled PBT UL94V-0(ROHS).
  - 3.Contact:0.46mm DIA. Phosphor Bronze gold Plating Over Nickel(ROHS).
  - 4.Welding post: 0.20mm Copper Alloy with Nickel Plated(ROHS).
- ※MATES WITH MODULAR PLUG CONFORMING TO FCC PART 68,SUBPART F.  
 ※The Dimensions Marked"▲" Symbols Are Stand For Key Characteristics.

产品客户图 Customer Drw		GLGNET® 深圳市方向电子股份有限公司 SHEN ZHEN GLGNET ELECTRONICS CO.,LTD.			
未注公差 TOLERANCE UNLESS OTHERWISE SPECIFIED	.X .XX .XXX X°	±0.35 ±0.25 ±0.15 ±2°	设计 DESIGN	品名 TITLE	5921-P-2x6-8C
比例 SCALE	1:1	角法 PROJ.	设计 DESIGN	品名 TITLE	5921-P-2x6-8C
张数 SHEET	1/1	大小 SIZE	校对 CHECKED	料号 ITEM NO.	43040-00GXX1
单位 UNIT	mm	版本 REV.	核准 APPROVED	图号 DWG NO.	GLG-W0-257