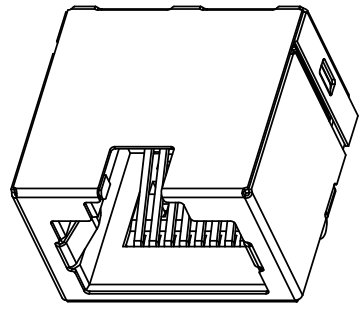
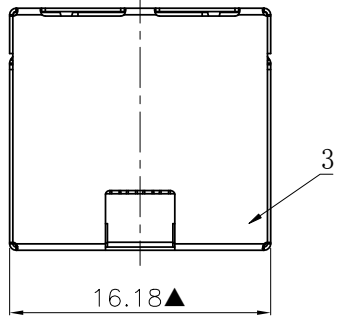


NO.	ECN NO.	DESCRIPTION	REV.	DRAW	DATE
1.					



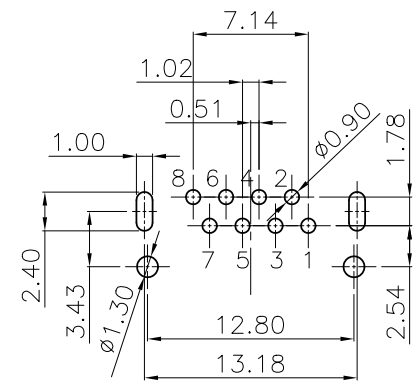
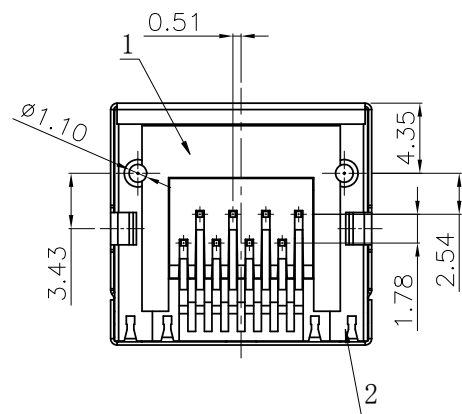
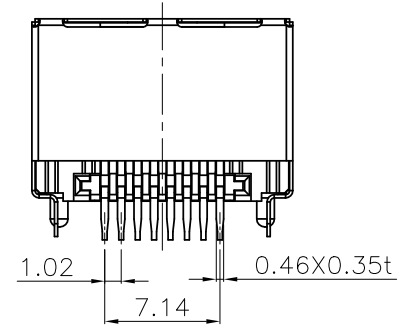
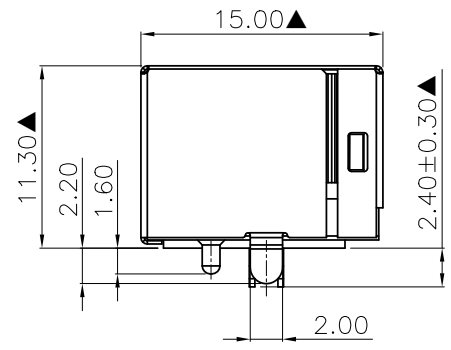
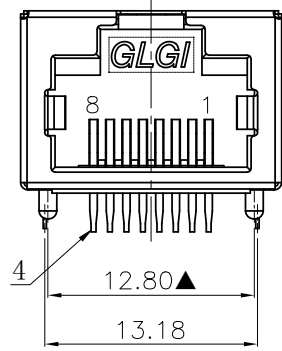
41921-0 0 X X X 1

规格流水码 | 电镀代码

S:半金亮锡 | 05-1u"

M:半金雾锡 | 11-3u"

 | 23-30u"



RECOMMENDED PCB LAYOUT
COMPONENT SIDE(t=1.6mm, tol:±0.05)

- MATERIALS:
1. HOUSING:GLASS FILLED PA46 BLACK UL94V-0. (ROHS)
 - 2 INSERT:GLASS FILLED PBT BLACK UL94V-0. (ROHS)
 3. SHIELDING:0.2MM THICKNESS COPPER ALLOY WITH NICKEL PLATED.
 4. CONTACT:0.35*0.46MM PHOSPHOR BRONZE PLATING OVER NICKEL (ROHS).
- ※MATES WITH MODULAR PLUG CONFORMING TO FCC PART 68, SUBPART F.
※The Dimensions Marked"▲" Symbols Are Stand For Key Characteristics.

产品客户图 Customer Drw		GLGNET® 深圳市方向电子股份有限公司 Shenzhen GLGNET Electronics Co.,LTD.			
未注公差 TOLERANCE UNLESS OTHERWISE SPECIFIED	.X .XX .XXX .X°	±0.35 ±0.25 ±0.15 ±1°	设计 DESIGN	品名 TITLE	5632-Q-S-8P8C
比例 SCALE	1:1	角法 PROJ.	校对 CHECKED	料号 ITEM NO.	41921-00XXX1
张数 SHEET	1/1	大小 SIZE	核准 APPROVED	图号 DWG NO.	GLG-WO-343 GLG-110393
单位 UNIT	mm	版本 REV.	B1		