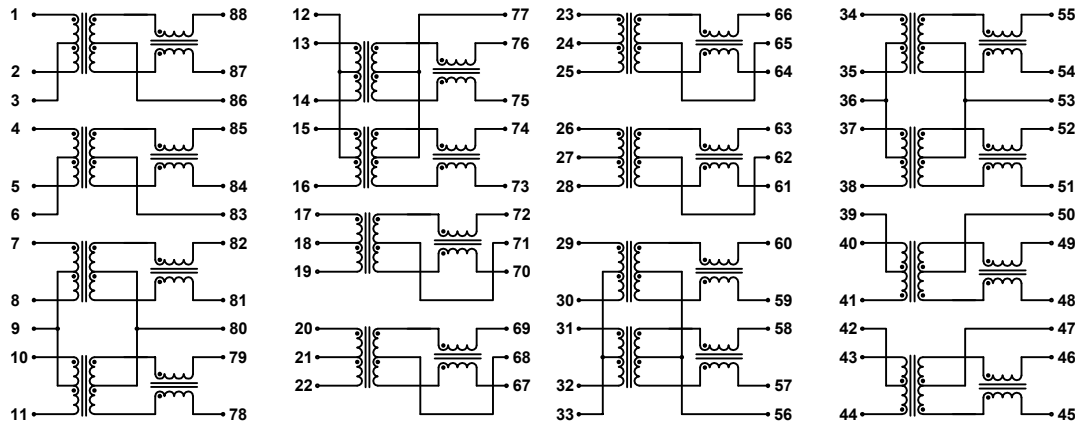
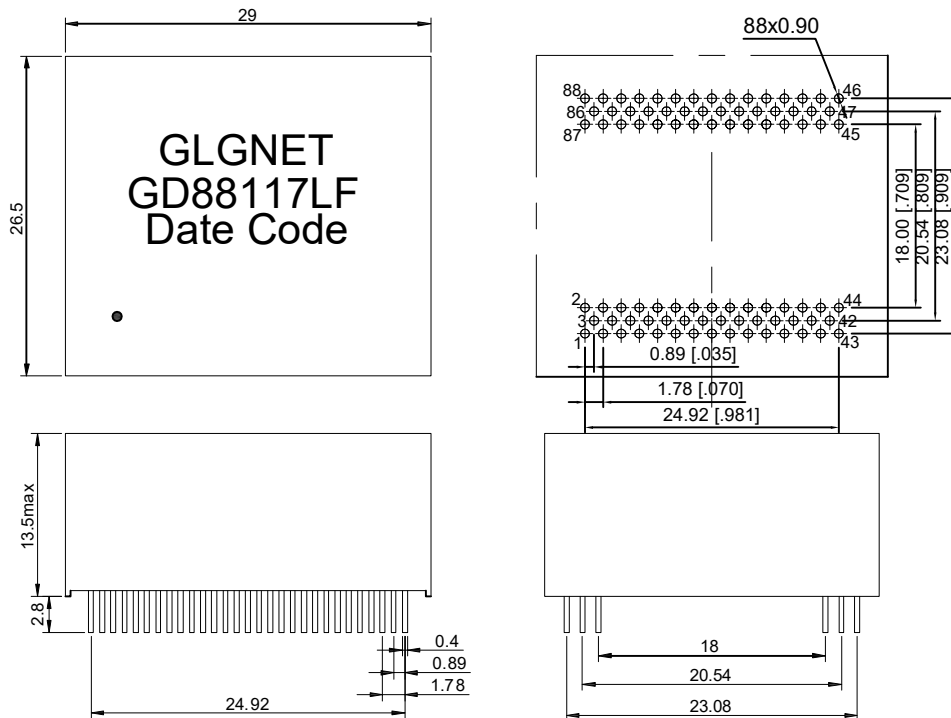


# Schematic



# Mechanical



| NO. | ECN NO. | DESCRIPTION | REV. | DRAW | DATE |
|-----|---------|-------------|------|------|------|
| 1   |         |             |      |      |      |
| 2   |         |             |      |      |      |
| 3   |         |             |      |      |      |

| PARAMETER                          | SPECIFICATIONS   |
|------------------------------------|--|
| OPERATING TEMPERATURE              | 0°C To +70°C   |
| STORAGE TEMPERATURE                | -25°C To +125°C  |
| TURNS RATIO                        | 1:1±5%   |
| OPEN CIRCUIT INDUCTANCE(OCL)       | 350uH MIN@100KHz/100mV With 8mA DC Bias  |
| INSERTION LOSS(IL)                 | -1.0dB MAX@1MHz-100MHz;  |
| RETURN LOSS(RL)<br>(Z out=100 OHM) | -18dB MIN@1MHz-30MHz; -14dB MIN@30-60MHz;<br>-12dB MIN@60-80MHz; -10dB MIN@80MHz-100MHz; |
| CROSSTALK<br>(ADJACENT CHANNELS)   | -30dB MIN@1-100MHz;  |
| (DCMR)                             | -40dB MIN@30MHz; -35dB MIN@60MHz;<br>-30dB MIN@100MHz;                                   |
| HI-POT                             | 1500Vrms   |
| STANDARD                           | Designed to meet IEEE802.3ab Requiement  |

| 产品客户图 Customer Drw                        |   | GLGNET® 方向电子       |   |
|---|---|--------------------|---|
| 未注公差 TOLERANCE UNLESS OTHERWISE SPECIFIED | 0.XX ±0.10<br>X.XX ±0.25<br>XX.XX ±0.25<br>X° ±2° | GLGNET ELECTRONICS |   |
| 比例 SCALE                                  | 1:1   | Description        | 1000 BASE-T Ethernet Isolation Transformer<br>88PIN DIP PROFILE PACKAGE |
| 张数 SHEET                                  | 1/1   | 设计 DESIGN          | Jockey-luo 2021.12.08   |
| 单位 UNIT                                   | mm  | 品名 TITLE           | GD88117LF   |
|   |   | 校对 CHECKED         | Jockey-luo 2021.12.08   |
|   |   | 核准 APPROVED        | BLUSE.BAI 2021.12.08  |
|   |   | 料号 ITEM NO.        |   |
|   |   | 图号 DWG NO.         |   |