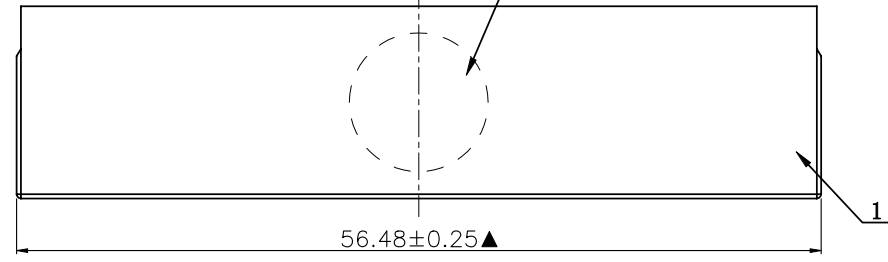


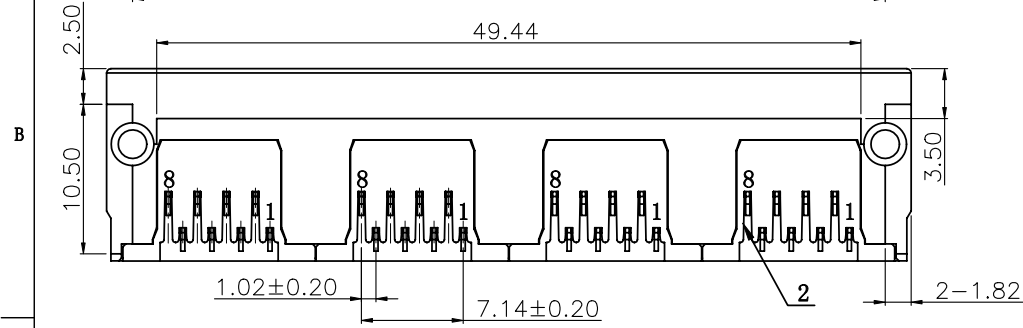
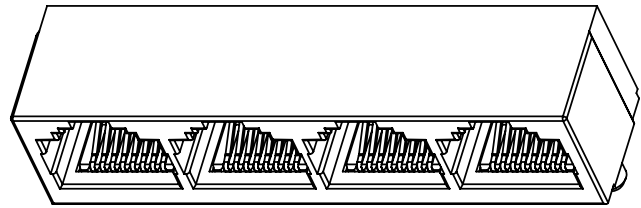
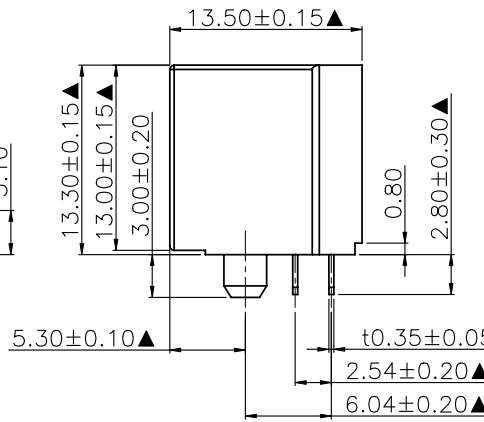
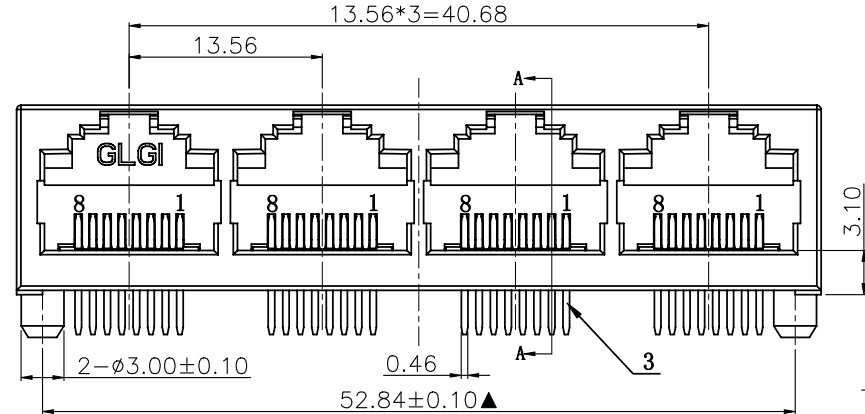
NO.	ECN NO.	DESCRIPTION	REV.	DRAW	DATE
1					

此区域需保持光滑
不可有缩水、毛边现象



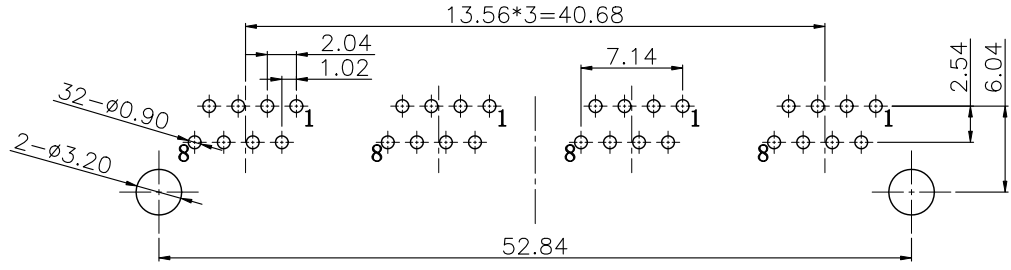
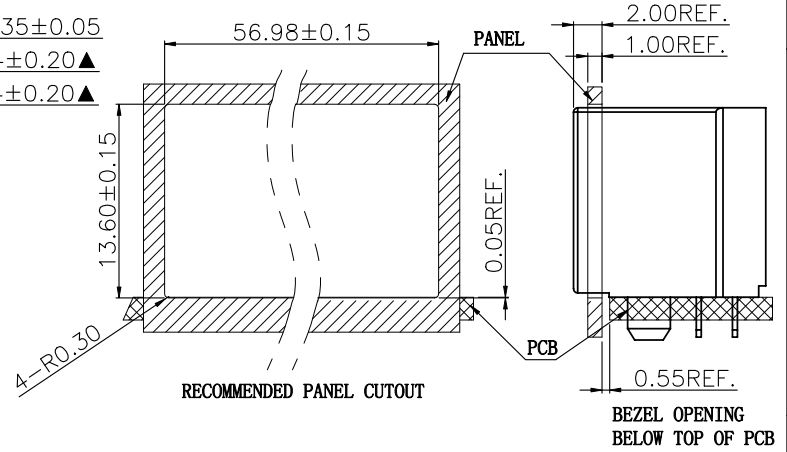
MATERIALS:

- 1. Housing: PBT 114C黄 UL94V-0 (ROHS)
- 2. Insert Molding: PBT 114C黄 UL94V-0 (RoHS)
- 3. Contact: T0.35mm Copper Alloy gold Plating Over Nickel. (ROHS)
- 4. 制程: 低温PIP回流焊 (200° C 10s)
- ※MATES WITH MODULAR PLUG CONFORMING TO FCC PART 68, SUBPART F.



41549-60 X X X 1

- 规格流水码 电镀代码
- 电镀规格 S 半光亮锡 34-6u"
 - M 半金雾锡 32-15u"
 - 31-30u"



RECOMMENDED PCB LAYOUT COMPONENT SIDE

产品客户图 Customer Drw		设计 DESIGN		品名 TITLE	
未注公差 TOLERANCE UNLESS OTHERWISE SPECIFIED	.X ±0.35 .XX ±0.25 .XXX ±0.15 .X° ±3°	设计 CHECKED		品名 TITLE	5633-Q-1x4-8P8C-6A-60
比例 SCALE 1:1	角法 PROJ.	校对 CHECKED		料号 ITEM NO.	41549-60XXX1
张数 SHEET 1/1	大小 SIZE A4	核准 APPROVED		图号 DWG NO.	GLG-W0-745
单位 SCALE mm	版本 REV A0				

GLGNET® 深圳市方向电子股份有限公司
SHEN ZHEN GLGNET ELECTRONICS CO., LTD.