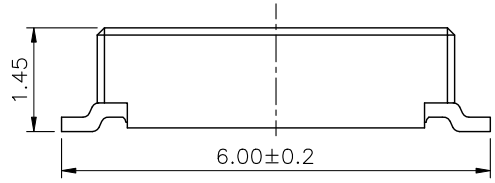
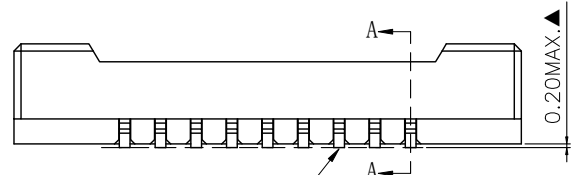
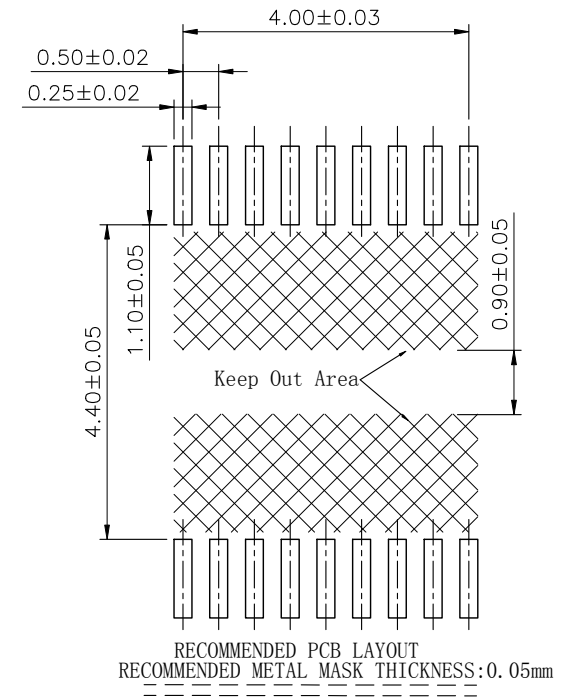
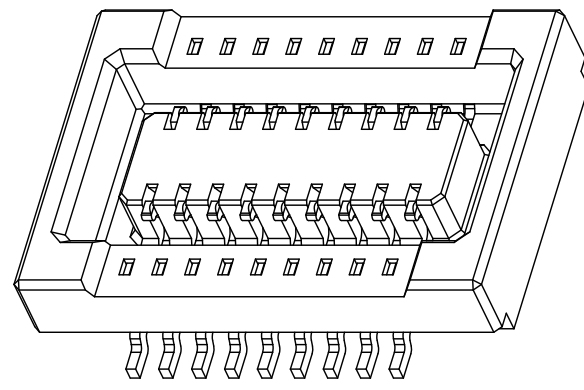
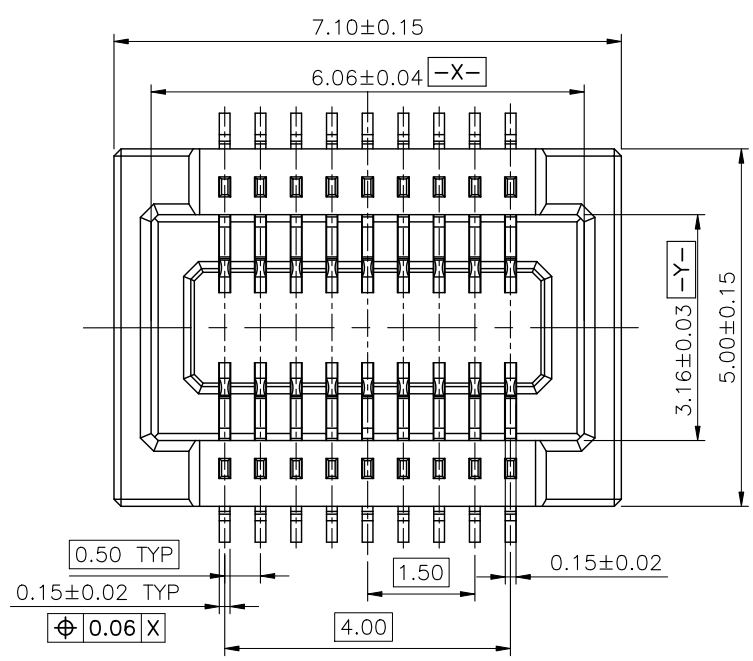
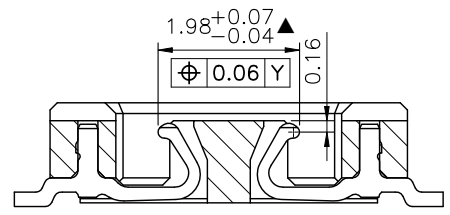


NO.	ECN NO.	DESCRIPTION	REV.	DRAW	DATE
1					
2					

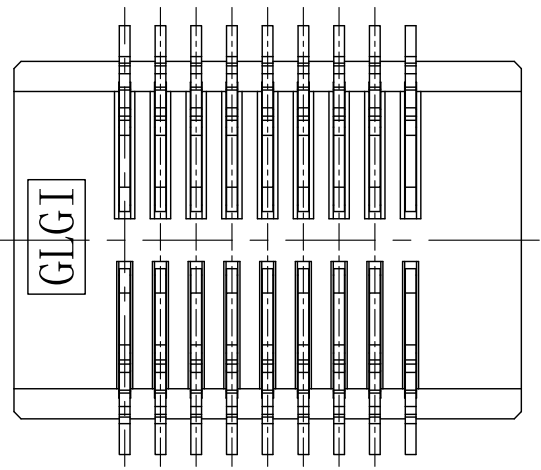


所有端子焊脚共面度0.08最大



Section "A-A"

- NOTES:
- HOUSING: LCP UL94V-0, BLACK
  - CONTACT: COPPER ALLOY.
  - THE HOUSING WITH WITHSTAND EXPOSURE UP TO 260° PEAK TEMPERATURE FOR 30 SECONDS IN A CONVECTION, INFRA-RED OR VAPOR REFLOW OVEN.
  - ▲DENOTES CRITICAL DIMENSION.



16008-6 0 I X X 1  
规格流水码  
电镀规格 J 全金  
12-Au:4u", Ni:50-100u"  
17-Au:8u", Ni:50-100u"

产品客户图 Customer Drw		GLGNET® 深圳市方向电子股份有限公司 SHEN ZHEN GLGNET ELECTRONICS CO.,LTD.			
未注公差 TOLERANCE UNLESS OTHERWISE SPECIFIED	.X ±0.20 .XX ±0.15 .XXX ±0.08 X° ±3°	设计 DESIGN		品名 TITLE	BTB F-SV-1-2x9-P050-H15
比例 SCALE	1:1	角法 PROJ.		校对 CHECKED	
张数 SHEET	1/1	大小 SIZE	A4	核准 APPROVED	
单位 UNIT	mm	版本 REV.	A3	料号 ITEM NO.	16008-60JXX1
				图号 DWG NO.	GLG-WS-447