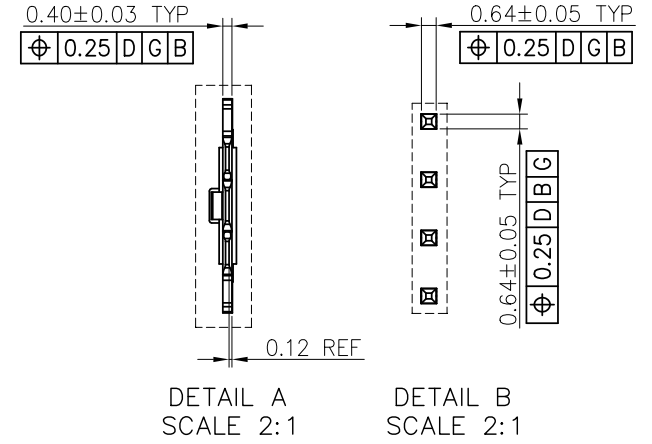
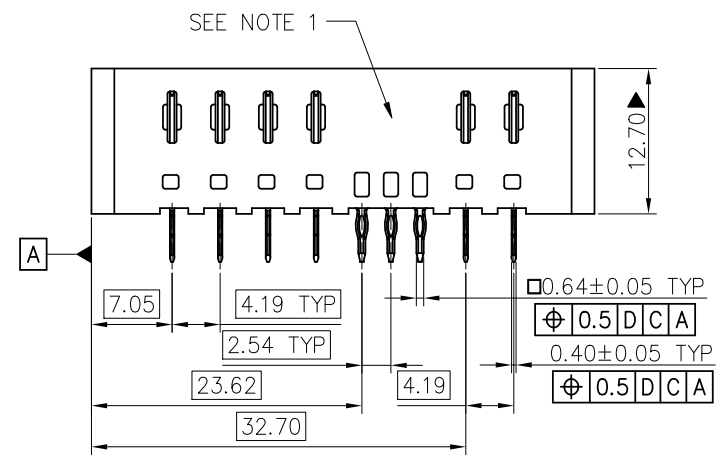
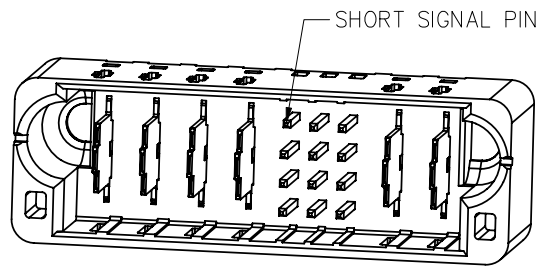
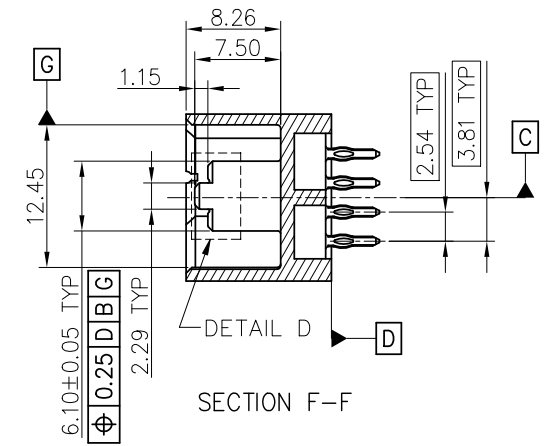
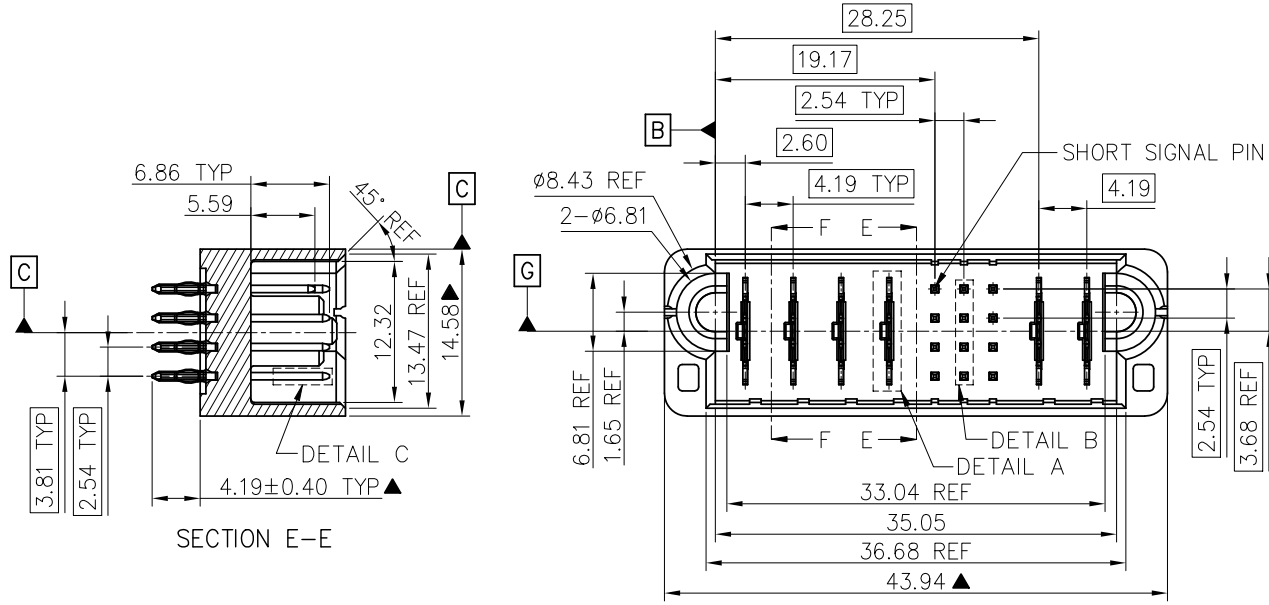
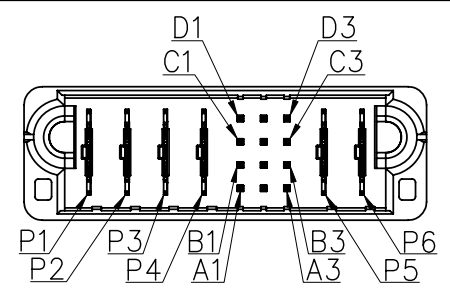


NO.	ECN NO.	DESCRIPTION	REV.	DRAW	DATE
8	-	UPDATED	8	YW PENG	2022/06/25



PIN LOCATION DESCRIPTION

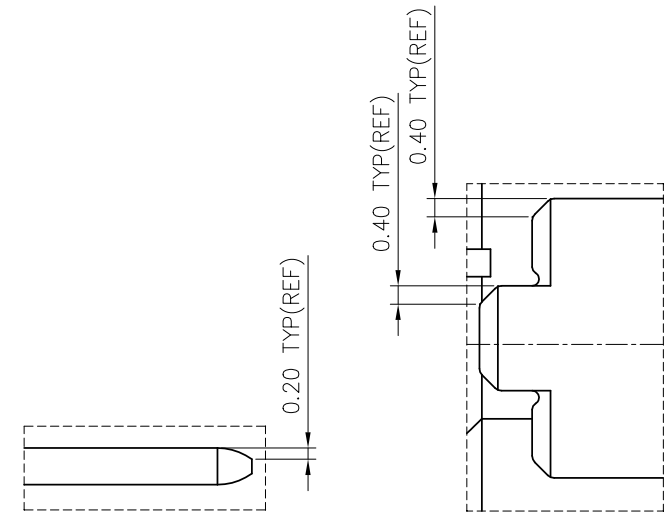


产品客户图 Customer Drw		GLGNET® 深圳市方向电子股份有限公司 SHEN ZHEN GLGNET ELECTRONICS CO.,LTD.			
未注公差 TOLERANCE UNLESS OTHERWISE SPECIFIED	.X ±0.35 .XX ±0.25 .XXX ±0.15 X° ±2°	设计 DESIGN	J LI	品名 TITLE	25A背板直公电源连接器 4P12S2P
比例 SCALE	1:1	角法 PROJ.	设计 CHECKED	料号 ITEM NO.	170149-00112
张数 SHEET	1/2	纸张 SIZE	核准 APPROVE	图号 DWG NO.	170149
单位 UNIT	mm	版本 REV.	8		

NO.	ECN NO.	DESCRIPTION	REV.	DRAW	DATE
8	-	UPDATED	8	YW PENG	2022/06/25

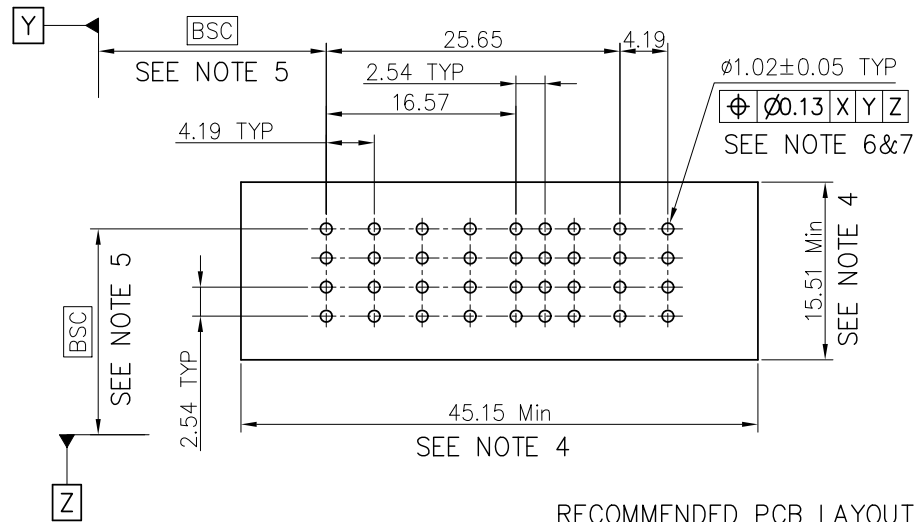
NOTES:

- "GLGNET" AND DATE CODE TO BE MARKED ON THIS SURFACE.
- MATERIALS:
HOUSING – GLASS FILLED HIGH TEMP THERMO PLASTIC, UL94V-0.
POWER CONTACTS – HIGH CONDUCTIVITY COPPER ALLOY.
SIGNAL CONTACTS – COPPER ALLOY.
- CONTACT PLATING: NOBLE METAL PLATING ON FUNCTIONAL AREA FOR SIGNAL AND POWER CONTACTS.
- MECHANICAL CONNECTOR KEEP OUT ZONE.
- DATUM AND BASIC DIMENSIONS ESTABLISHED BY CUSTOMER.
- PCB – ALL HOLE DIAMETERS ARE FINISHED HOLE SIZES.
- PCB – 1.150 ± 0.025 DRILLED HOLE PLATED WITH 7.62um MIN Sn OVER 25.4um-76.2um Cu PLATING TO ACHIEVE A 1.02 ± 0.05 mm FINISHED HOLE.
- NOTE "▲" THE MARK IS THE KEY DIMENSION.
- PRODUCT SPECIFICATION: GLG-AR150.



DETAIL C
SCALE 5:1

DETAIL D
SCALE 4:1



RECOMMENDED PCB LAYOUT

产品客户图 Customer Drw		GLGNET® 深圳市方向电子股份有限公司 SHEN ZHEN GLGNET ELECTRONICS CO.,LTD.					
未注公差 TOLERANCE UNLESS OTHERWISE SPECIFIED	.X	±0.35	设计 DESIGN	J LI	品名 TITLE	25A背板直公电源连接器 4P12S2P	
	.XX	±0.25					
	.XXX	±0.15					
	X°	±2°					
比例 SCALE	1:1	角法 PROJ.	设计 DESIGN	J LI	品名 TITLE	25A背板直公电源连接器 4P12S2P	
张数 SHEET	2/2	纸张 SIZE	校对 CHECKED	YW PENG	料号 ITEM NO.	170149-00112	
单位 UNIT	mm	版本 REV.	核准 APPROVE	HT ZHANG	图号 DWG NO.	170149	