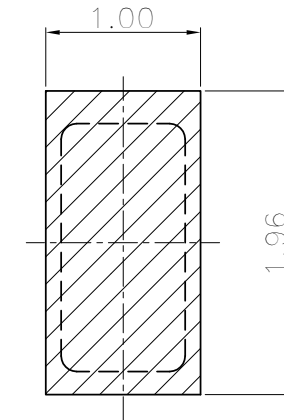
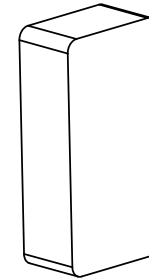
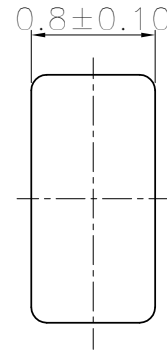
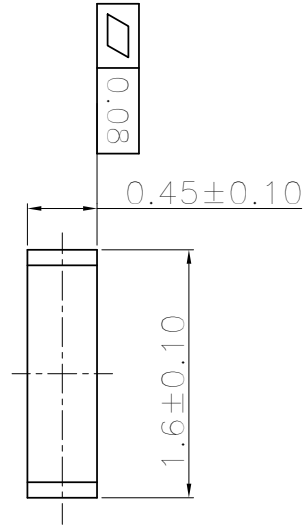


NO.	ECN NO.	DESCRIPTION	REV.	DRAW	DATE
1	-	INITIAL	1	MARK WEI	2020/03/25
2	-	MODIFY	2	MARK WEI	2020/04/18
3	-	MODIFY	3	MARK WEI	2020/06/05
4	-	△4 MODIFY	4	WU ZHANG	2021/02/02



△4 RECOMMENDED PCB LAYOUT (TOL: $\pm 0.05\text{mm}$)

NOTES:

- MATERIALS:
CONTACTS - HIGH CONDUCTIVITY COPPER ALLOY.
- CONTACT PLATING: COPPER BACKING, GOLD OVER NICKEL.

产品客户图 Customer Drw				GLGNET® 深圳市方向电子股份有限公司 SHEN ZHEN GLGNET ELECTRONICS CO., LTD.				
未注公差 TOLERANCE UNLESS OTHERWISE SPECIFIED	.X .XX .XXX X°	± 0.35 ± 0.25 ± 0.15 $\pm 2^\circ$	设计 DESIGN	WU ZHANG	2021/02/02	品名 TITLE	10A低压直流电源连接器	
比例 SCALE	1:1	角法 PROJ.	第一角法	校对 CHECKED	YW PENG	2021/02/02	料号 ITEM NO.	71A0-010000-A008
张数 SHEET	1/1	大小 SIZE	A4	核准 APPROVED	HT ZHANG	2021/02/02	图号 DWG NO.	GLG-71-017