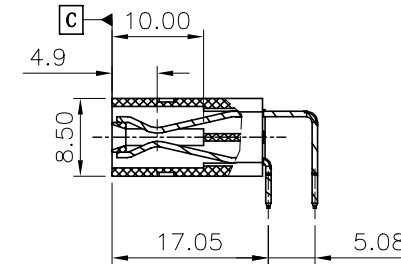
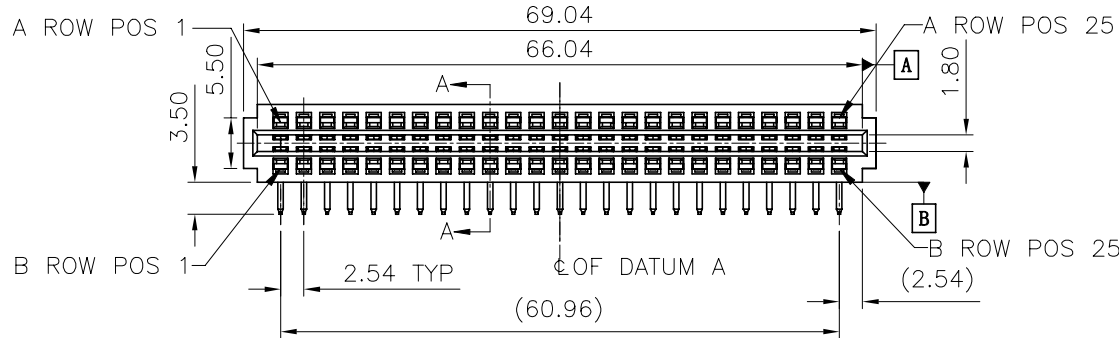
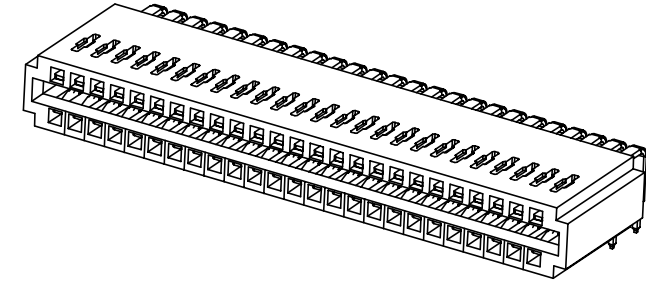
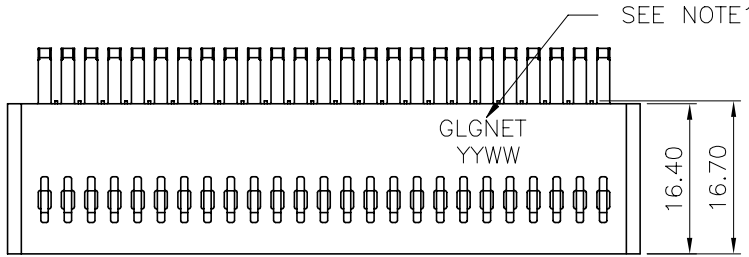


NO.	ECN NO.	DESCRIPTION	REV.	DRAW	DATE
1	-	INITIAL	1	KL CHANG	2021/08/03
2	-	MODIFY	2	WU ZHANG	2022/03/22
3	-	MODIFY	3	WU ZHANG	2022/06/05
4	-	MODIFY	4	SONGPING	2022/11/17



SECTION A-A

NOTES:

- "GLGNET" AND DATE CODE TO BE MARKED ON THIS SURFACE.
- MATERIALS:
 - HOUSING - LCP, UL94V-0, BLACK.
 - POWER CONTACTS - HIGH CONDUCTIVITY COPPER ALLOY.
- CONTACT PLATING: NOBLE METAL PLATING ON FUNCTIONAL AREA FOR CONTACTS.
- SPECIFICATIONS:
 - CURRENT RATING: 10AMP/PIN.
 - INSULATION RESISTANCE: 1000MΩ MIN.
 - DIELECTRIC WITHSTANDING: 1000V AC/DC.
 - CONTACT RESISTANCE: 20MΩ MAX.
 - SALT SPRAY: 48H.
 - OPERATING TEMPERATURE: -40°C ~ +105°C.
 - APPLICATION ENVIRONMENT: WAVE-SOLDERING, 10S/TEMPERATURE 265°C MAX.

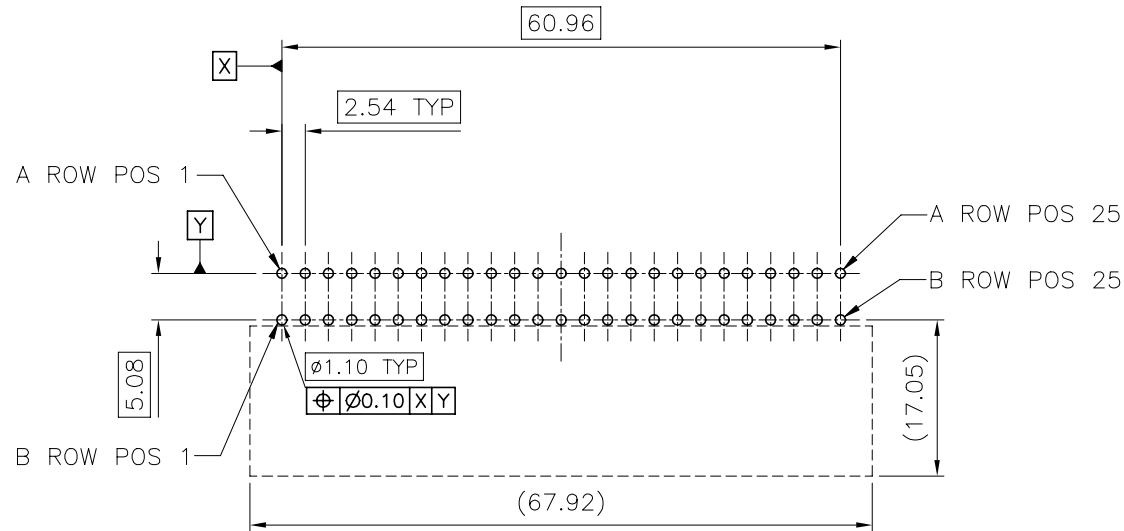
5. PACKAGE: TRAY

Form 1

料号	旧料号	品名	规格
170182-00112	71B3-005000-A003	2x25PIN PEC CONNECTOR	50P, 焊接, 30u" Au
170182-00212	/		50P, 焊接, 15u" Au

产品客户图 Customer Drw		GLGNET® 深圳市方向电子股份有限公司 SHEN ZHEN GLGNET ELECTRONICS CO., LTD.							
未注公差 TOLERANCE UNLESS OTHERWISE SPECIFIED	.X ±0.35 .XX ±0.25 .XXX ±0.15 X° ±2°	比例 SCALE	1:1	角法 PROJ.	设计 DESIGN	WU ZHANG	2022/11/17	品名 TITLE	2x25PIN PEC CONNECTOR
张数 SHEET	1/3	大小 SIZE	A4	校对 CHECKED	YW PENG	2022/11/17	料号 ITEM NO.	See Form 1	
单位 UNIT	mm	版本 REV.	4	核准 APPROVED	HT ZHANG	2022/11/17	图号 DWG NO.	170182	

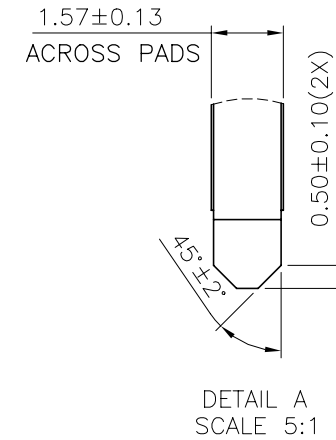
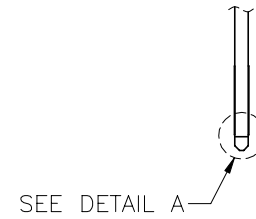
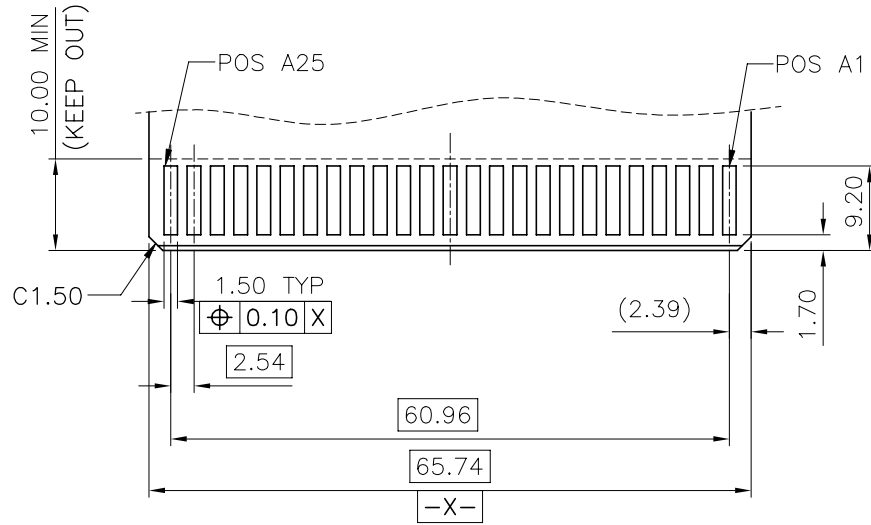
NO.	ECN NO.	DESCRIPTION	REV.	DRAW	DATE
1	-	INITIAL	1	KL CHANG	2021/08/03
2	-	MODIFY	2	WU ZHANG	2022/03/22
3	-	MODIFY	3	WU ZHANG	2022/06/05
4	-	MODIFY	4	SONGPING	2022/11/17



RECOMMENDED PCB LAYOUT
TOLERANCE: $\pm 0.05\text{mm}$

产品客户图 Customer Drw				GLGNET® 深圳市方向电子股份有限公司 SHEN ZHEN GLGNET ELECTRONICS CO.,LTD.				
未注公差 TOLERANCE UNLESS OTHERWISE SPECIFIED	.X	± 0.35		设计 DESIGN	WU ZHANG	2022/11/17	品名 TITLE	2x25PIN PEC CONNECTOR
	.XX	± 0.25						
	.XXX	± 0.15						
	X°	$\pm 2^\circ$						
比例 SCALE	1:1	角法 PROJ.		校对 CHECKED	YW PENG	2022/11/17	料号 ITEM NO.	See Form 1
张数 SHEET	2/3	大小 SIZE	A4	核准 APPROVED	HT ZHANG	2022/11/17	图号 DWG NO.	170182
单位 UNIT	mm	版本 REV.	4					

NO.	ECN NO.	DESCRIPTION	REV.	DRAW	DATE
1	-	INITIAL	1	KL CHANG	2021/08/03
2	-	MODIFY	2	WU ZHANG	2022/03/22
3	-	MODIFY	3	WU ZHANG	2022/06/05
4	-	MODIFY	4	SONGPING	2022/11/17



RECOMMENDED DAUGHTER CARD LAYOUT
(TOP SIDE); TOLERANCE: $\pm 0.05\text{mm}$

产品客户图 Customer Drw		GLGNET [®] 深圳市方向电子股份有限公司 SHEN ZHEN GLGNET ELECTRONICS CO.,LTD.						
未注公差 TOLERANCE UNLESS OTHERWISE SPECIFIED	.X .XX .XXX X°	± 0.35 ± 0.25 ± 0.15 $\pm 2^\circ$	设计 DESIGN	WU ZHANG	2022/11/17	品名 TITLE	2x25PIN PEC CONNECTOR	
比例 SCALE	1:1	角法 PROJ.	第一角法	校对 CHECKED	YW PENG	2022/11/17	料号 ITEM NO.	See Form 1
张数 SHEET	3/3	大小 SIZE	A4	核准 APPROVED	HT ZHANG	2022/11/17	图号 DWG NO.	170182