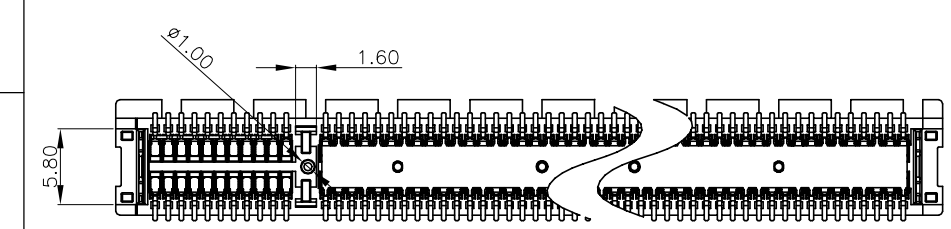
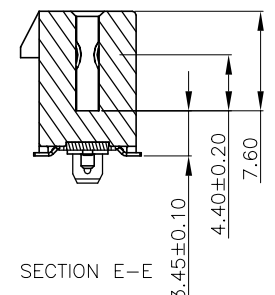
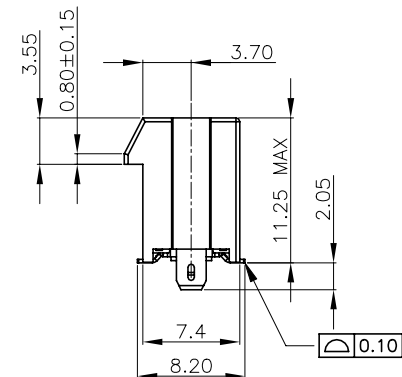
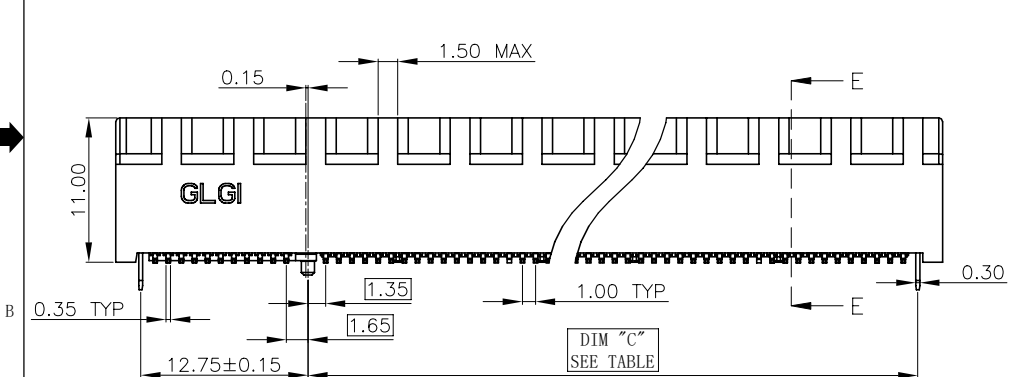
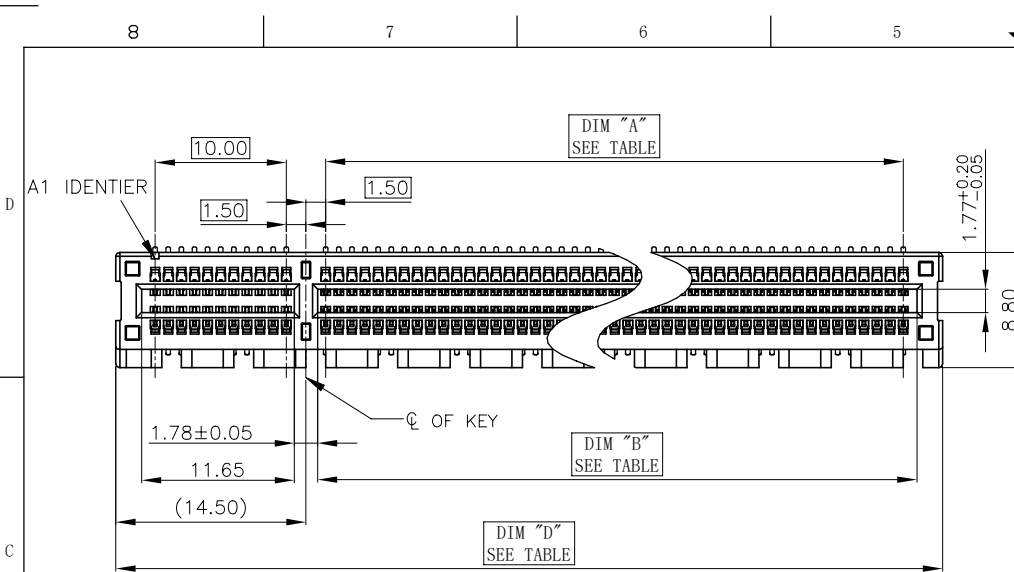


NO.	ECN NO.	DESCRIPTION	REV.	DRAW	DATE
1	NA	NEW DRAWING	A0	ZhangKun Zhou	2022/08/02
2					

NOTES:

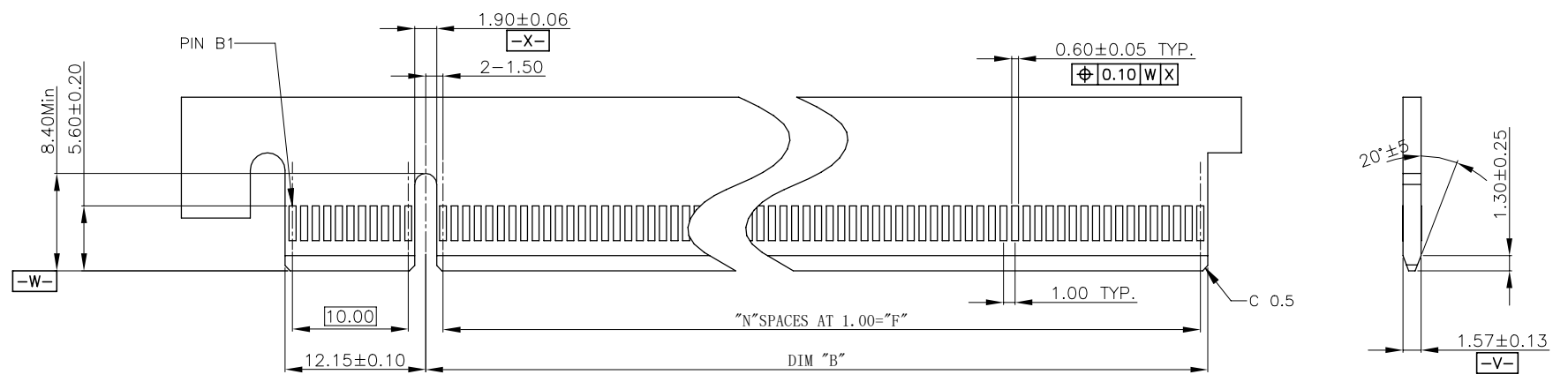
- MATERIAL
HOUSING: PA9T BLACK UL 94V-0
CONTACT: COPPER ALLOY.
HOLDDOWN BLADES: COPPER ALLOY.
- PLATING:
CONTACT: UNDERPLATE 50u" NICKEL OVER ALL
SOLDER AREA: 100u" TIN
MATING AREA: 30u" AU
HOLDDOWN BLADES: 100u" TIN OVER 50u" NICKEL
- MEET RoHS AND HALOGEN FREE



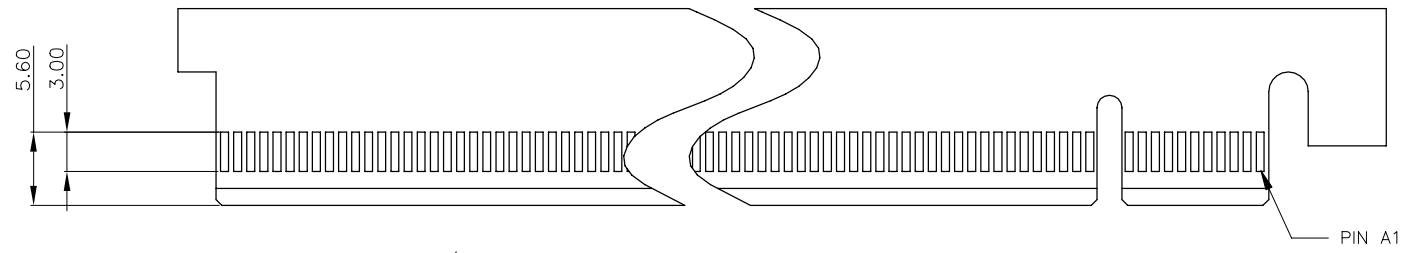
产品客户图 Customer Drw	
未注公差 TOLERANCE UNLESS OTHERWISE SPECIFIED	.X ±0.30 .XX ±0.20 .XXX ±0.10 .X° ±2°
比例 SCALE	1:1
张数 SHEET	1/3
单位 SCALE	mm
角法 PROJ.	第一角法
大小 SIZE	A4
版本 REV	A0

GLGNET® 深圳市方向电子股份有限公司 SHEN ZHEN GLGNET ELECTRONICS CO., LTD.				
设计 DESIGN	ZhangKun Zhou	2022/08/02	品名 TITLE	PCI Express 5.0 SMT TYPE-BLADE
校对 CHECKED	Peter. Pan	2022/08/02	料号 ITEM NO.	160019-00112
核准 APPEOVED	Peter. Pan	2022/08/02	图号 DWG NO.	GLG-160019

NO.	ECN NO.	DESCRIPTION	REV.	DRAW	DATE
1	NA	NEW DRAWING	A0	ZhangKun Zhou	2022/08/02
2					



← I/O PANEL DIRECTION
PRIMARY (COMPONENT) SIDE
TOLERANCE: ±0.13



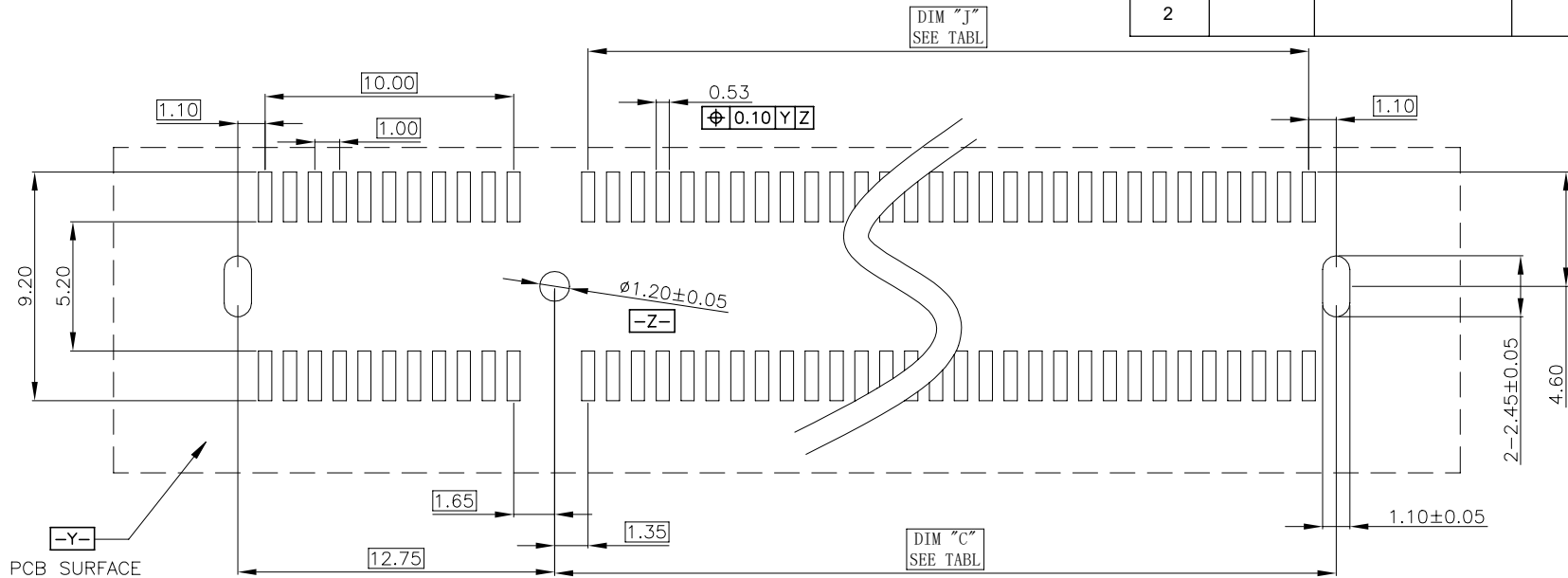
→ I/O PANEL DIRECTION
SECONDARY (SOLDER) SIDE
TOLERANCE: ±0.13

CONNECTOR LINK WIDTH	POSITION	N	DIM"G"
X16	164	70	72.15

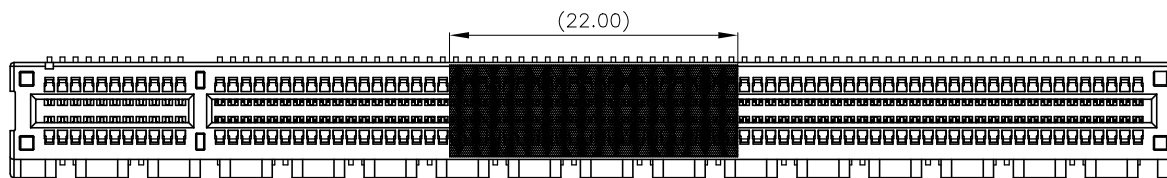
产品客户图 Customer Drw	
未注公差 TOLERANCE UNLESS OTHERWISE SPECIFIED	.X ±0.30 .XX ±0.20 .XXX ±0.10 .X° ±2°
比例 SCALE	1:1
张数 SHEET	2/3
单位 SCALE	mm

GLGNET® 深圳市方向电子股份有限公司 SHEN ZHEN GLGNET ELECTRONICS CO., LTD.					
设计 DESIGN	ZhangKun Zhou	2022/08/02	品名 TITLE	PCI Express 5.0 SMT TYPE-BLADE	
校对 CHECKED	Peter. Pan	2022/08/02	料号 ITEM NO.	160019-00112	
核准 APPROVED	Peter. Pan	2022/08/02	图号 DWG NO.	GLG-160019	

NO.	ECN NO.	DESCRIPTION	REV.	DRAW	DATE
1	NA	NEW DRAWING	A0	ZhangKun Zhou	2022/08/02
2					



RECOMMENDED PCB LAYOUT, PAD TYPE
SCALE 2:1



POSITION OF KAPTON TAPE

POSITION	DIM "A" $^{+0.15}_{-0.05}$	DIM "B" ± 0.15	DIM "C" ± 0.15	DIM "D" ± 0.25	DIM "J"
164	70	71.65	72.45	89.00	70

产品客户图 Customer Drw		GLGNET® 深圳市方向电子股份有限公司 SHEN ZHEN GLGNET ELECTRONICS CO., LTD.						
未注公差 TOLERANCE UNLESS OTHERWISE SPECIFIED	.X .XX .XXX .X°	± 0.30 ± 0.20 ± 0.10 $\pm 2^\circ$	设计 DESIGN	ZhangKun Zhou	2022/08/02	品名 TITLE	PCI Express 5.0 SMT TYPE-BLADE	
比例 SCALE	1:1	角法 PROJ.		校对 CHECKED	Peter. Pan	2022/08/02	料号 ITEM NO.	160019-00112
张数 SHEET	3/3	大小 SIZE	A4	核准 APPROVED	Peter. Pan	2022/08/02	图号 DWG NO.	GLG-160019