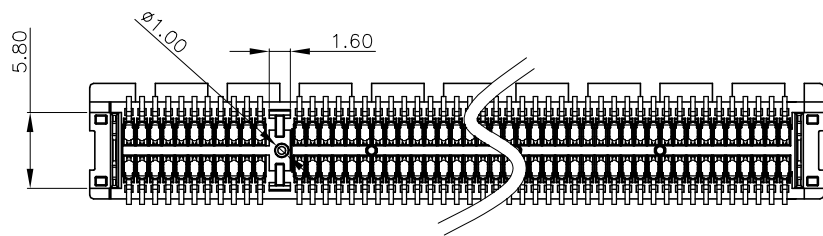
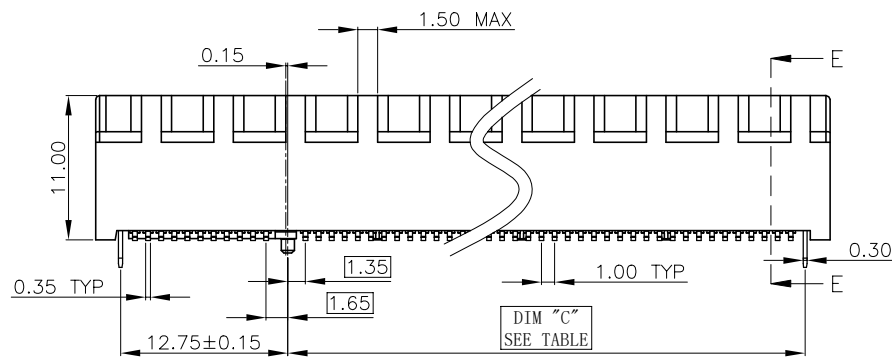
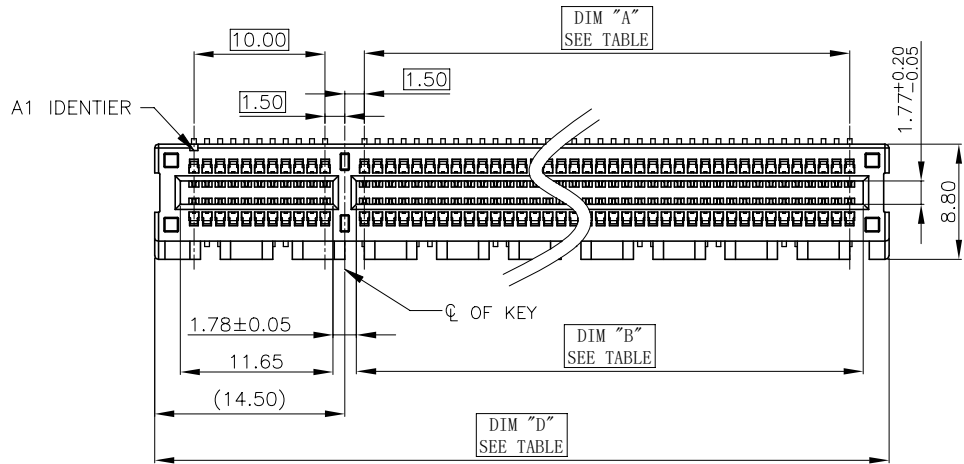


NO.	ECN NO.	DESCRIPTION	REV.	DRAW	DATE
1	NA	NEW DRAWING	A0	ZhangKun Zhou	2022/03/21
2					



NOTES:

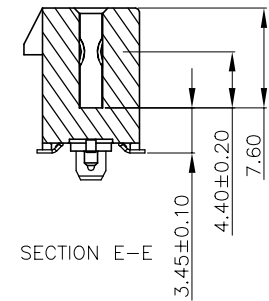
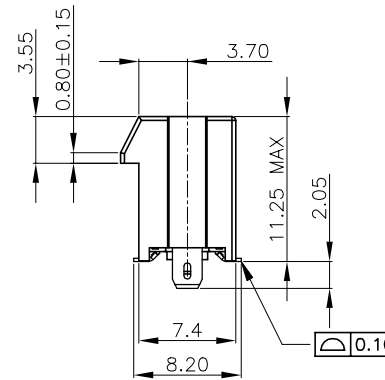
1. MATERIAL

HOUSING: PA9T BLACK UL 94V-0
CONTACT: COPPER ALLOY.
HOLDDOWN BLADES: COPPER ALLOY.

2. PLATING:

CONTACT: UNDERPLATE 50u" NICKEL OVER ALL
SOLDER AREA: 100u" TIN
MATING AREA: 30u" AU
HOLDDOWN BLADES: 100u" TIN OVER 50u" NICKEL

3. MEET RoHS AND HALOGEN FREE



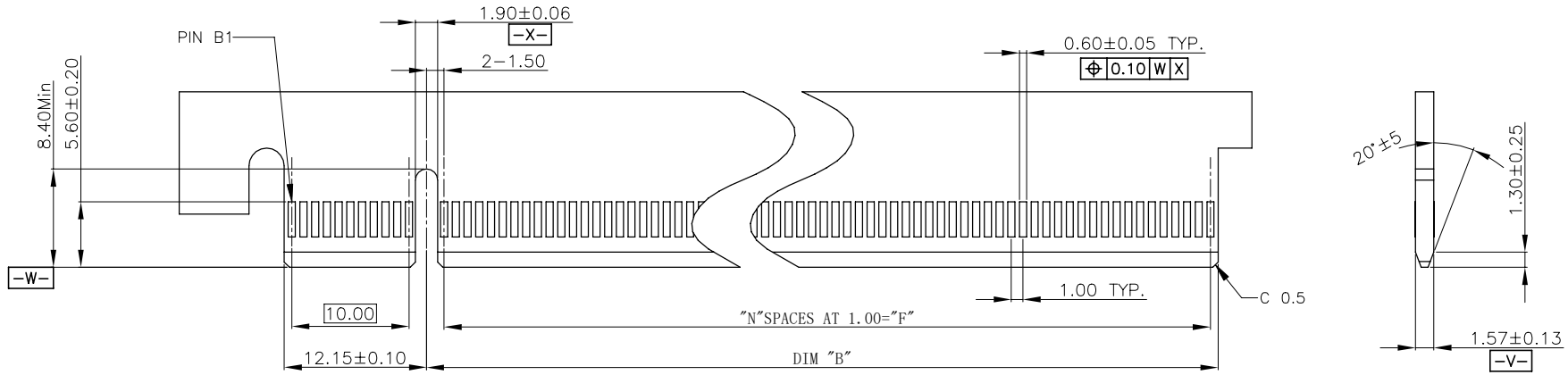
产品客户图 Customer Drw

未注公差 TOLERANCE UNLESS OTHERWISE SPECIFIED	.X	±0.30
	.XX	±0.20
	.XXX	±0.10
	.X°	±2°

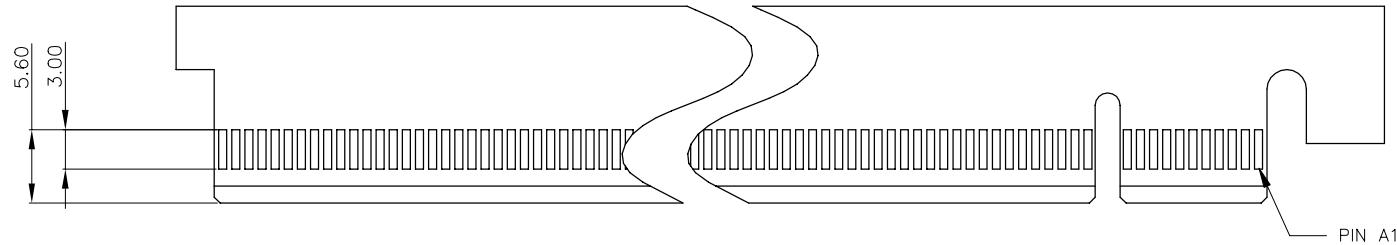
GLGNET® 深圳市方向电子股份有限公司
SHEN ZHEN GLGNET ELECTRONICS CO., LTD.

比例 SCALE	1:1	角法 PROJ.		设计 DESIGN	ZhangKun Zhou	2022/03/21	品名 TITLE	PCI Express 4.0 SMT TYPE-BLADE
张数 SHEET	1/3	大小 SIZE	A4	校对 CHECKED	Peter. Pan	2022/03/21	料号 ITEM NO.	160008-00112
单位 SCALE	mm	版本 REV	A0	核准 APPROVED	Peter. Pan	2022/03/21	图号 DWG NO.	GLG-160008

NO.	ECN NO.	DESCRIPTION	REV.	DRAW	DATE
1	NA	NEW DRAWING	A0	ZhangKun Zhou	2022/03/21
2					



← I/O PANEL DIRECTION
PRIMARY (COMPONENT) SIDE
TOLERANCE: ±0.13



I/O PANEL DIRECTION
SECONDARY (SOLDER) SIDE →
TOLERANCE: ±0.13

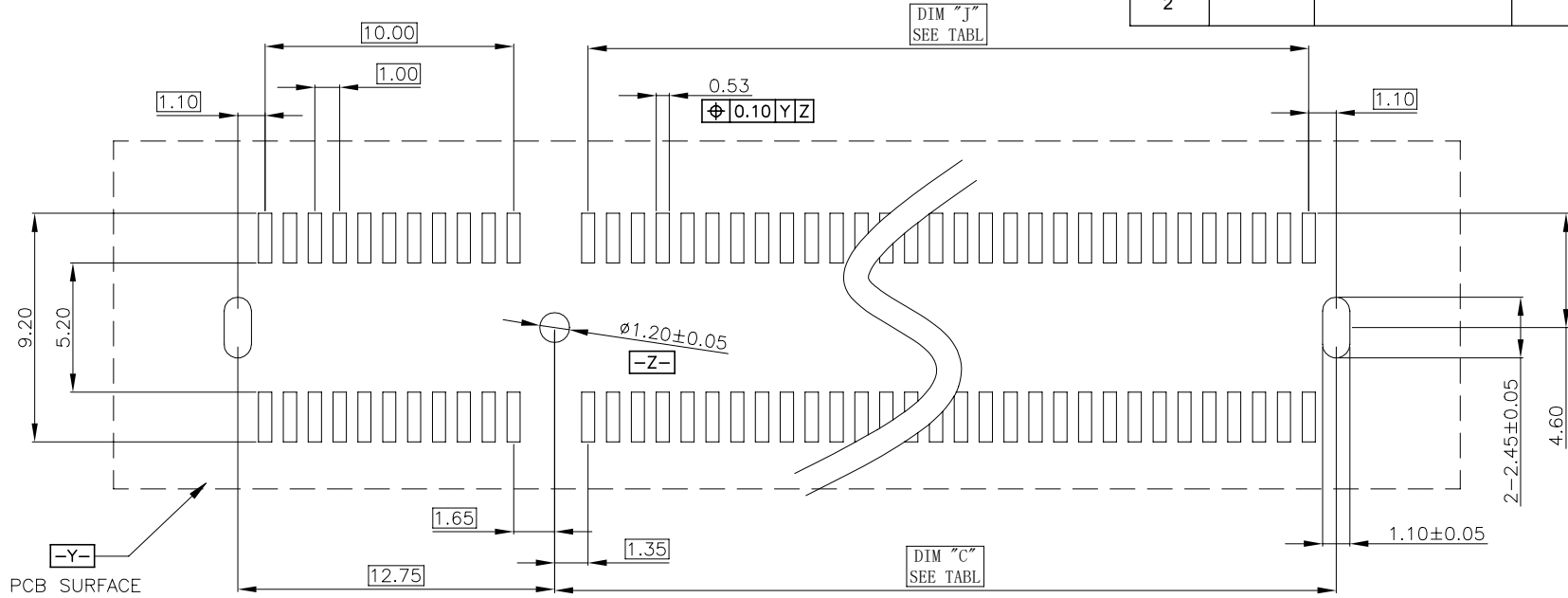
CONNECTOR LINK WIDTH	POSITION	N	DIM "G"
X16	164	70	72.15

产品客户图 Customer Drw	
未注公差 TOLERANCE UNLESS OTHERWISE SPECIFIED	.X ±0.30 .XX ±0.20 .XXX ±0.10 .X° ±2°
比例 SCALE	1:1
张数 SHEET	2/3
单位 SCALE	mm

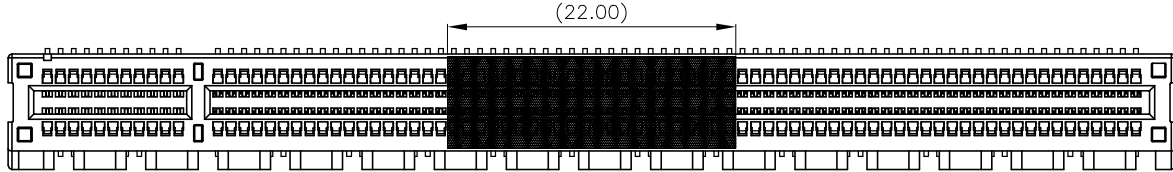
GLGNET® 深圳市方向电子股份有限公司
SHEN ZHEN GLGNET ELECTRONICS CO., LTD.

设计 DESIGN	ZhangKun Zhou	2022/03/21	品名 TITLE	PCI Express 4.0 SMT TYPE-BLADE
角法 PROJ.			料号 ITEM NO.	160008-00112
校对 CHECKED	Peter. Pan	2022/03/21	图号 DWG NO.	GLG-160008
核准 APPROVED	Peter. Pan	2022/03/21		

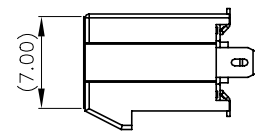
NO.	ECN NO.	DESCRIPTION	REV.	DRAW	DATE
1	NA	NEW DRAWING	A0	ZhangKun Zhou	2022/03/21
2					



SCALE 2:1
RECOMMENDED PCB LAYPUT, PAD TYPE



POSITION OF KAPTON TAPE



POSITION	DIM"A" $^{+0.15}_{-0.05}$	DIM"B" ± 0.15	DIM"C" ± 0.15	DIM"D" ± 0.25	DIM"J"
164	70	71.65	72.45	89.00	70

产品客户图 Customer Drw	
未注公差 TOLERANCE UNLESS OTHERWISE SPECIFIED	.X ± 0.30 .XX ± 0.20 .XXX ± 0.10 .X° $\pm 2^\circ$
比例 SCALE	1:1
张数 SHEET	3/3
单位 SCALE	mm
角法 PROJ.	ϕ
大小 SIZE	A4
版本 REV	A0

GLGNET® 深圳市方向电子股份有限公司
SHEN ZHEN GLGNET ELECTRONICS CO., LTD.

设计 DESIGN	ZhangKun Zhou	2022/03/21	品名 TITLE	PCI Express 4.0 SMT TYPE-BLADE
校对 CHECKED	Peter. Pan	2022/03/21	料号 ITEM NO.	160008-00112
核准 APPROVED	Peter. Pan	2022/03/21	图号 DWG NO.	GLG-160008